

- VERIFY QUANTITIES AND REQUIREMENTS OF ALL HVAC & KITCHEN EQUIPMENT PRIOR TO ROUGH IN.
- ALL TELEPHONE/DATA/TV CABLES AND WIRES, AND TERMINATIONS OF ALL REQUIRED CABLE AND JACKS WILL BE INSTALLED BY THIRD PARTY.
- POWER SUPPLY FOR COMPUTER AND CASH REGISTER (86A & 94) SHALL BE ON THE SAME CIRCUIT BREAKER, W/ ISOLATED GROUND & ORANGE RECEPTACLE.
- ALL CIRCUITRY SHOWN WITHOUT TICKS SHALL HAVE (2) WIRES PLUS EQUIPMENT GROUNDING CONDUCTOR.
- WHEN WORKING IN JURISDICTIONS WHICH HAVE ADOPTED THE 2008 NEC OR LATER, ALL MULTI-WIRE BRANCH CIRCUITS SHALL HAVE SEPARATE NEUTRALS TO MEET THE REQUIREMENTS OF 2008 NEC 210.4(B).
- TRANSFORMERS SHALL BE MOUNTED ABOVE CEILING BELOW TRUSSES WITH LOW VOLTAGE WIRING FEEDING TO ALL EXTERIOR LIGHTS.
- ~~FOR CANOPY LIGHTING, REFER TO SHEET E-101.~~

POWER PLAN GENERAL NOTES 2

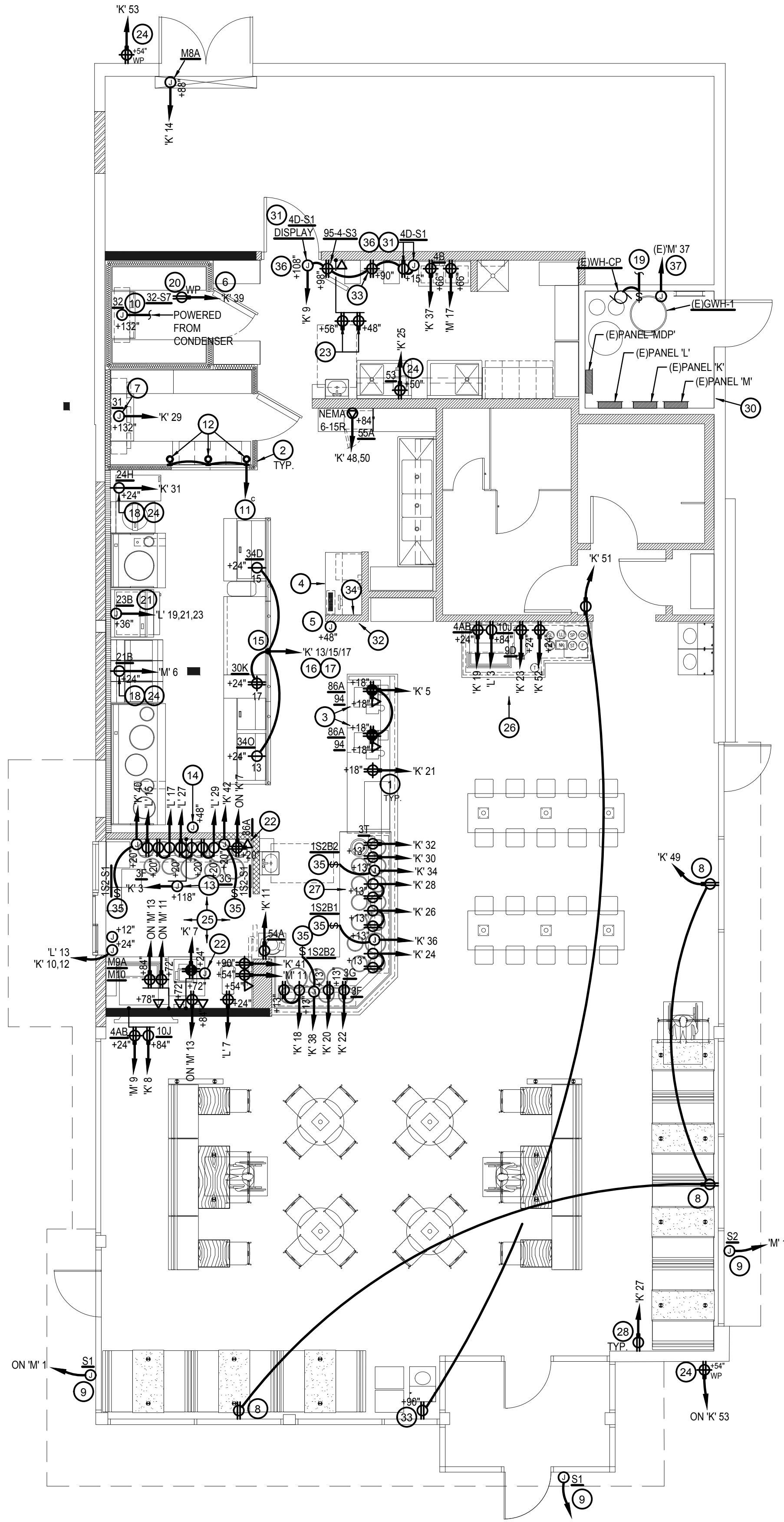
NOT TO SCALE E-100

1. ALL CIRCUITRY/CONDUIT FOR FRONT LINE EQUIPMENT TO BE ROUTED IN CASEWORK TO J-BOX IN WALL AND CONCEALED IN WALL.
2. PROVIDE SEALS AND EXPANSION COUPLINGS ON ALL CONDUITS ENTERING OR LEAVING AREA OF TEMPERATURE DIFFERENCE. REFER TO DETAIL 6/E-400 FOR ADDITIONAL INFORMATION.
3. PROVIDE (2) 1-1/2" CONDUITS WITH PULL STRINGS FROM CASH REGISTER TO MANAGER STATION. SEE P.O.S. AND SERVICE LINE ELEVATIONS, 3/E-200.
4. SEE 'MANAGER STATION ELEVATION' 1/E-200 FOR ADDITIONAL OUTLETS AND J-BOXES.
5. ANSUL PULL STATION. REFER TO DETAIL, 2/E-400.
6. REFER TO 'LTG AND DOOR HEATER' WIRING DIAGRAM, 10/E-400.
7. REFER TO 'COOLER EVAPORATOR COIL' WIRING DIAGRAM, 8/E-400.
8. SHOW WINDOW RECEPTACLE SHALL BE CONTROLLED VIA SWITCH "b". REFER TO 4/E101. RECEPTACLE SHALL BE MOUNTED IN WALL AS CLOSE TO TOP OF STRUCTURAL HEADER AS POSSIBLE.
9. W.P. J-BOX FOR SIGNAGE. COORDINATE LOCATION WITH ARCHITECT / OWNER / SIGN PACKAGE. SIGN DISCONNECT PROVIDED BY SIGN CONTRACTOR.
10. REFER TO 'FREEZER EVAPORATOR COIL' WIRING DIAGRAM, SHEET 9/E-400. THE FAN COIL UNIT IS POWERED FROM THE CONDENSER UNIT VIA DISCONNECT CONNECTION. HEAT TAPE PROVIDED AND INSTALLED BY ELECTRICIAN.
11. ROUTE HOMERUN THROUGH LIGHTING SWITCHBANK 'A' (SWITCH AS NOTED IN LOWER CASE). REFER TO 4/E-101 FOR MORE INFORMATION.
12. CONNECT TO VEGETABLE DISPLAY LIGHTING PROVIDED WITH WALK-IN COOLER.
13. HOOD CONTROL PANEL/ANSUL SYSTEM CABINET. MOUNT CABINET DIRECTLY BELOW T-BAR CEILING.
14. PROVIDE 2-GANG J-BOX @ 48" AFF FOR HOOD CONTROL SWITCHES. REFER TO M-400 AND M-401.
15. 1" CONDUIT STUB UP LOCATION IN STAINLESS STEEL POWER PANEL FOR ISLAND KITCHEN EQUIPMENT CONNECTION. REFER TO DETAIL 2/A-109. COORDINATE LOCATION WITH ARCHITECT / OWNER.
16. ROUTE CABLING / CIRCUITRY THROUGH 1" CONDUIT IN SLAB (KEYED NOTE #15).
17. UTILIZE SEAL TIGHT CONDUIT FOR ALL WIRING INCLUDED ALONG LOW WALL PANEL.
18. ALL DEVICES UNDER HOOD TO BE PROVIDED AND INSTALLED WITH SHUNT TRIP CIRCUIT BREAKER AND WATERPROOFING BOX (RED DOT #CKSUV). REFER TO COOKLINE ELECTRICAL ELEVATIONS, 6/E-200.
19. RECIRCUIT EXISTING WATER HEATER CIRCULATION PUMP (WH-CP) TO BACK-OF-HOUSE LIGHTING CIRCUITRY/CONTROL.
20. PROVIDE WEATHERPROOF RECEPTACLE FOR HEAT TAPE. COORDINATE FINAL LOCATION WITH REFRIGERATION INSTALLER.
21. ELECTRIC GRILL '23B': FEED WITH 3 #8, #10 GROUND, 1" CONDUIT. REFER TO 4/E-200.
22. SEE DRIVE THRU ELEVATION 2/E-200 FOR CONDUIT SIZES AND CONFIGURATIONS.
23. FURNISH AND INSTALL (2) HUBBELL GFSTBF20 FACELESS GFCI (OR EQUIVALENT) (1) FOR EACH CIRCUIT FEEDING EQUIPMENT BENEATH THE KITCHEN HOOD WHICH UTILIZES SIMPLEX 120V RECEPTACLES. INSTALL IN AN ACCESSIBLE LOCATION IN THIS GENERAL AREA, OR AS DIRECTED BY THE OWNER, ARCHITECT OR ENGINEER. PROVIDE ADDITIONAL OUTLETS AS REQUIRED TO FEED ALL SUCH LOADS BENEATH HOOD. FASTEN A PLASTIC LABEL STATING CIRCUIT AND EQUIPMENT SERVED FOR EACH OUTLET.
24. PROVIDE WP, COVER, IN-USE RED DOT (#CKSUV).
25. SEE FOR DRIVE-THRU ELEVATIONS, 2/E-200.
26. SEE DRINK STATION ELEVATIONS, 5/E-200.
27. SEE 3/E-200 FOR SERVICE LINE ELEVATIONS.
28. SEE RECEPT. DIAGRAM 3/E-400.
29. ~~SEE DINING ROOM MONITOR ELEVATION, SHEET 8/E-200.~~
30. EXISTING IRRIGATION CONTROLLER LOCATED IN UTILITY ROOM (VERIFY EXACT LOCATION IN FIELD) TO BE REUSED. RECIRCUIT TO A-53.
31. REFER TO SHEET 9/E-200 FOR INSTALLATION OF CO2 MONITOR.
32. SEE SWITCH BANK ELEVATION, SHEET 7/E-200.
33. FLY LIGHT RECEPTACLE SHALL BE INSTALLED WITH A RECESSED CLOCK OUTLET. TYP OF LOCATIONS.
34. SEE SECURITY KEY PAD ELEVATION 1/E-200.
35. CONNECT HEAT LAMPS TO COUNTER-MOUNTED SWITCH PROVIDED AND INSTALLED BY CONTRACTOR. COORDINATE EXACT LOCATION WITH KITCHEN EQUIPMENT PROVIDER.
36. E.C. TO PROVIDE CO2 MONITOR, MOUNT OVER J-BOX WITH WIRING THROUGH WALL CONDUIT FOR CLEAN INSTALLATION. PROVIDE ALL OTHER REQUIRED CONNECTIONS AND COMPONENTS FOR FULLY WORKING SYSTEM.
37. EXISTING GAS WATER HEATER (GWH-1) AND CIRCUIT TO REMAIN AS-IS.

POWER PLAN KEYED NOTES 3

NOT TO SCALE E-100

ALL SINGLE PHASE RECEPTACLES RATED 150V OR LESS, 50A OR LESS, AND ALL THREE-PHASE RECEPTACLES RATED 150V TO GROUND OR LESS, 100A OR LESS INSTALLED IN BATHROOMS, KITCHENS, FOOD PREP AREAS, ON ROOFTOPS, OUTDOORS, LOCKER ROOMS, INDOOR WET LOCATIONS, GARAGES, SERVICE BAYS, CRAWLSPACES, UNFINISHED PORTIONS OF BASEMENTS, AND WITHIN 6' FROM TOP INSIDE EDGE OF SINKS, SHALL HAVE GROUND-FAULT CIRCUIT-INTERRUPTER PROTECTION, PER NEC 210.8(B). GFCI PROTECTION SHALL BE BY EITHER RATED BREAKERS OR DEVICES. GFCI PROTECTION SHALL BE IN AN ACCESSIBLE LOCATION, NOT BEHIND EQUIPMENT.



POWER FLOOR PLAN 1

Scale: 3/16"=1'-0" E-100



PANDA EXPRESS, INC.
1683 Walnut Grove Ave.
Rosemead, California
91770

Telephone: 626.799.9898
Facsimile: 626.372.8288

All ideas, designs, arrangement and plans indicated or represented by this drawing are the property of Panda Express Inc. and were created for use on this specific project. None of these ideas, designs, arrangements or plans may be used by or disclosed to any person, firm, or corporation without the written permission of Panda Express Inc.

REVISIONS:

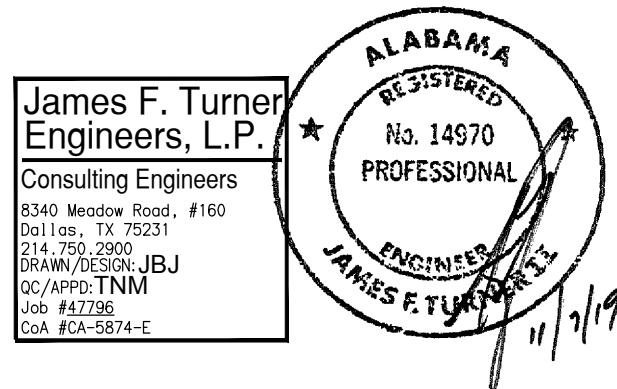
ISSUE DATE:

1st	DEVELOPER REVIEW	07.15.19
2nd	SITE PLAN SUBMITTAL	08.26.19
3rd	SITE COMMENTS	09.05.19
4th	ISSUE FOR PERMIT	10.01.19
5th	ISSUE FOR BID	11.07.19

DRAWN BY: PM / KL / EA

PANDA PROJECT #: S8-20-D7163

ARCH PROJECT #: 19027



Heights Venture
ARCHITECTURE + DESIGN

HOUSTON 1111 North Loop West, Suite 800 Houston, Texas 77008 713.869.1103 V
DALLAS 5741 Legacy Drive, Suite 320 Plano, Texas 75024 972.490.7262 V

PANDA EXPRESS

2096 INTERSTATE DR.
OPELIKA, AL, 36801
3600 FSDT

TWW REMODEL

E-100

POWER FLOOR PLAN

TRUE WARM & WELCOME

BID ISSUE