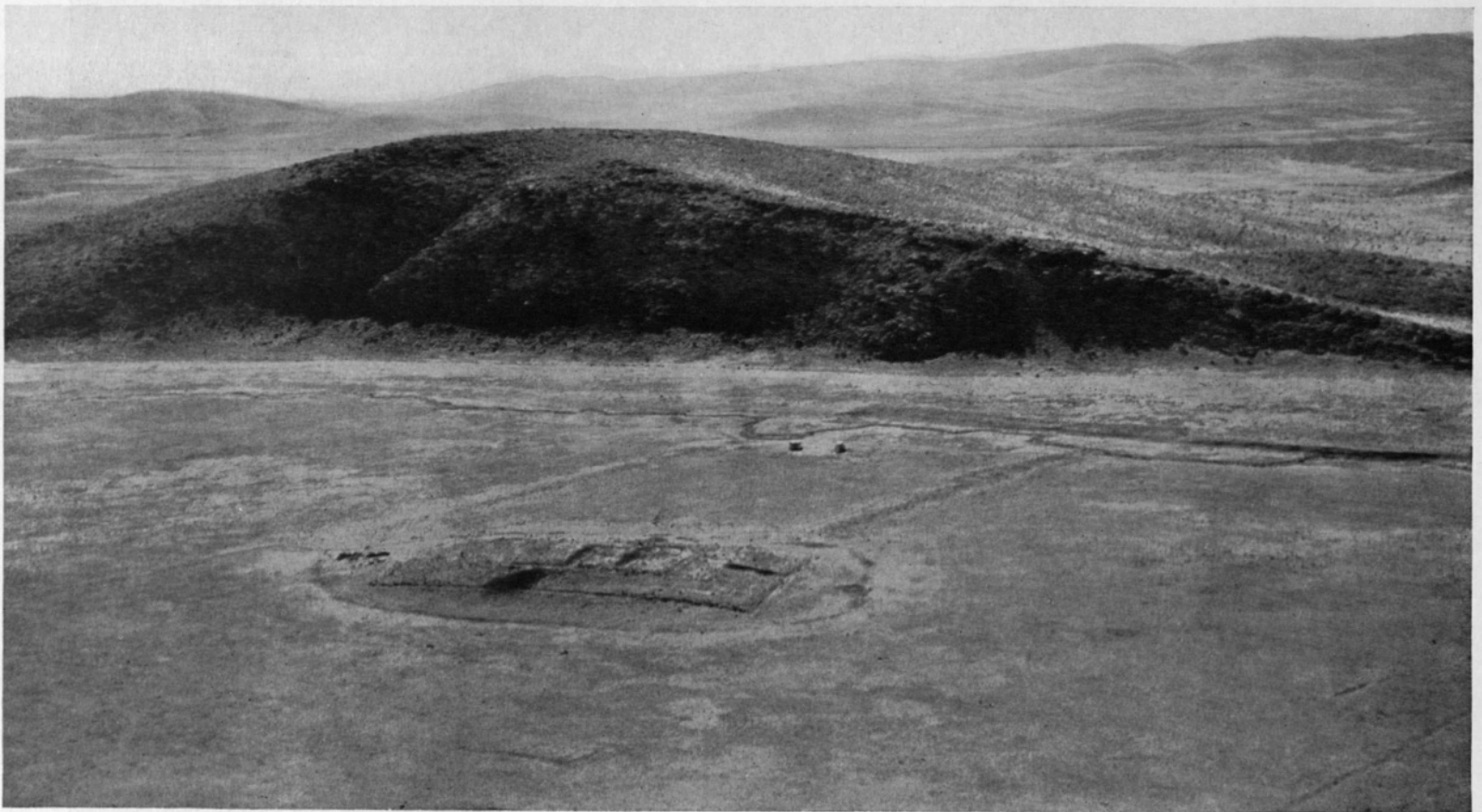
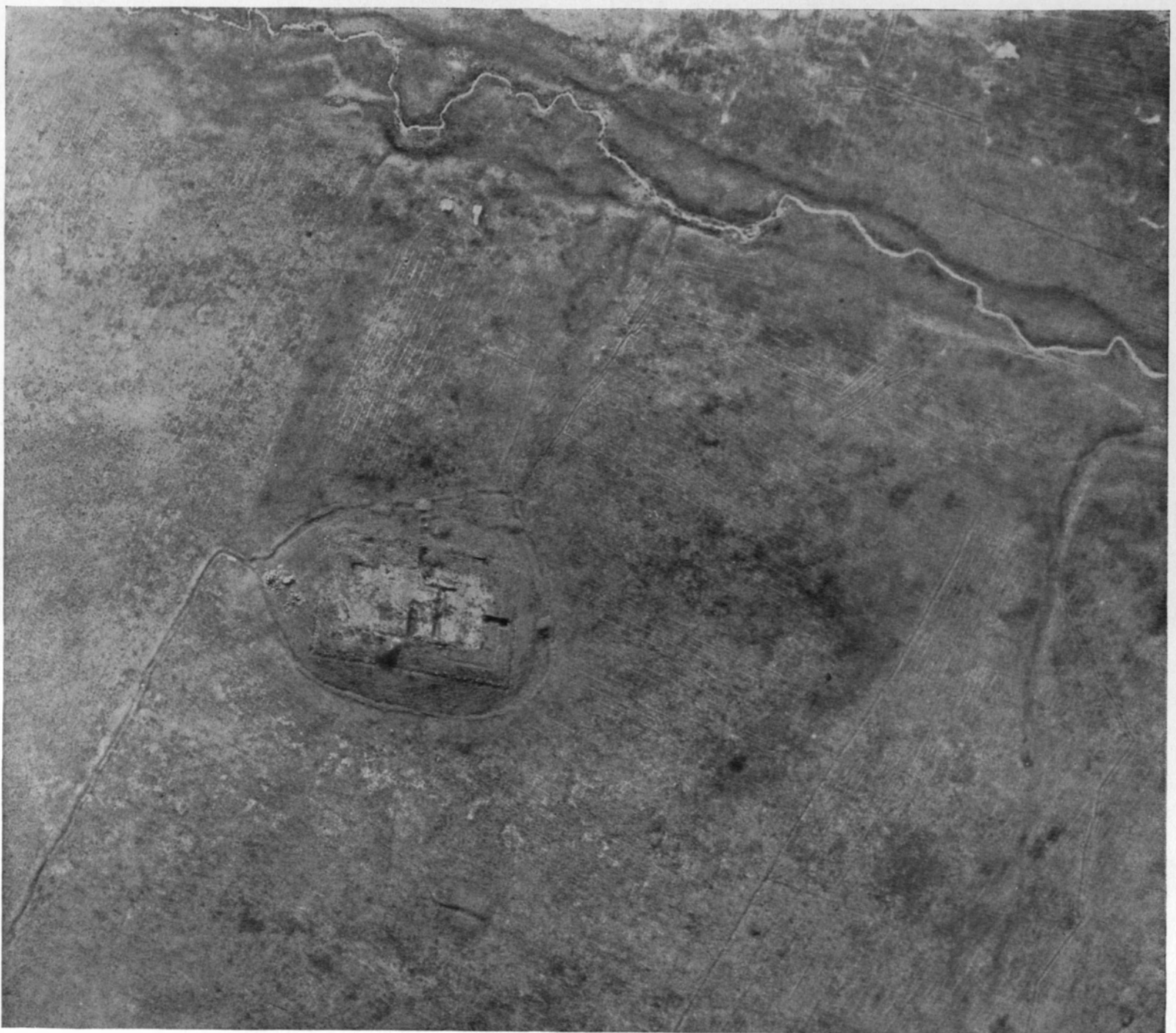


FIG. 3. PASARGADAE. AERIAL
SURVEY STRIP (Sept. 28,
1935; 6:52 A.M.)

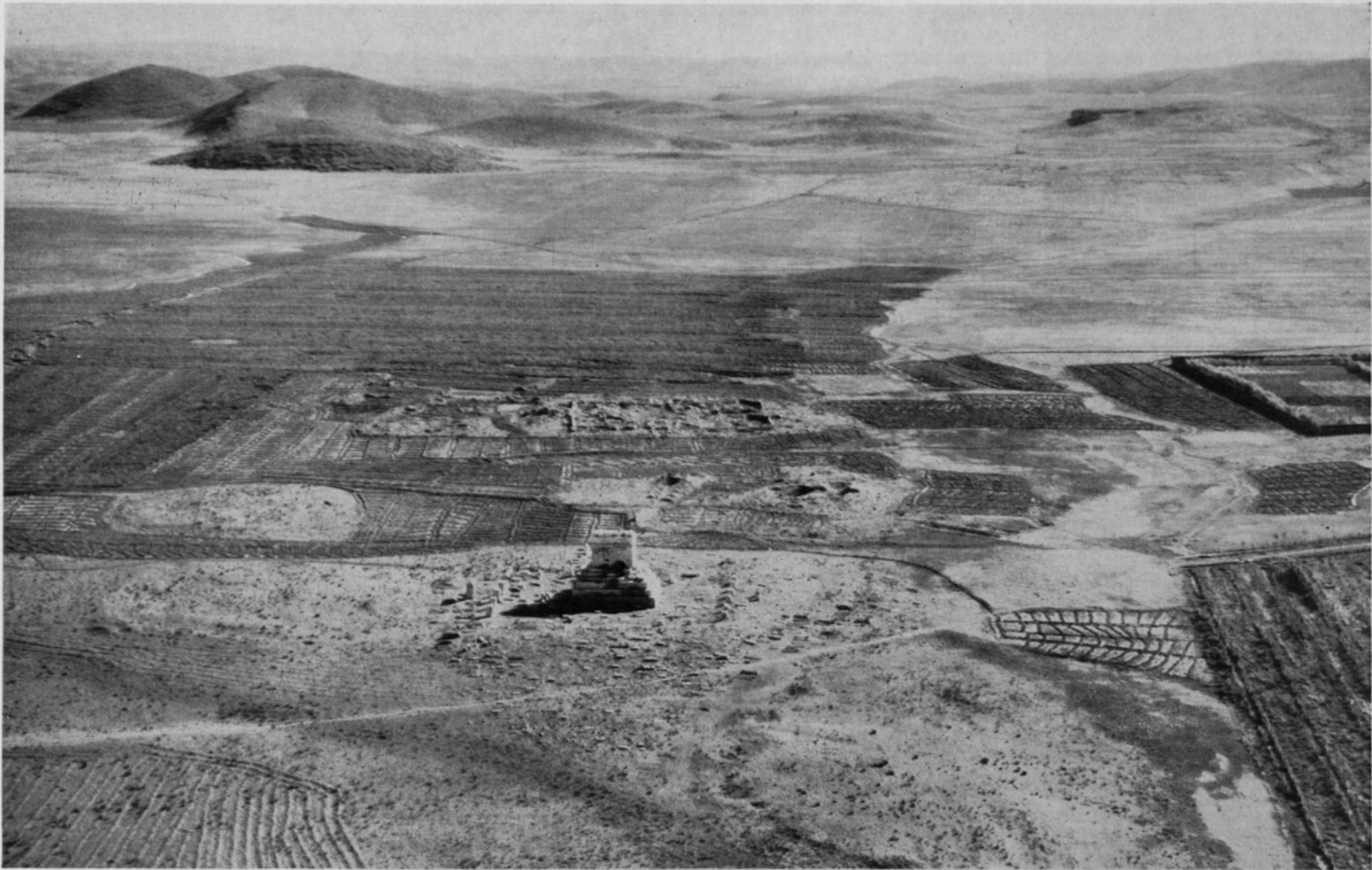


A



B

FIG. 4. PASARGADAE. AIR VIEWS OF SACRED PRECINCT. *A*. OBLIQUE (May 20, 1936; 7:12 A.M.; direction, approximately ENE). *B*. VERTICAL (May 9, 1936; 6:12 A.M.)

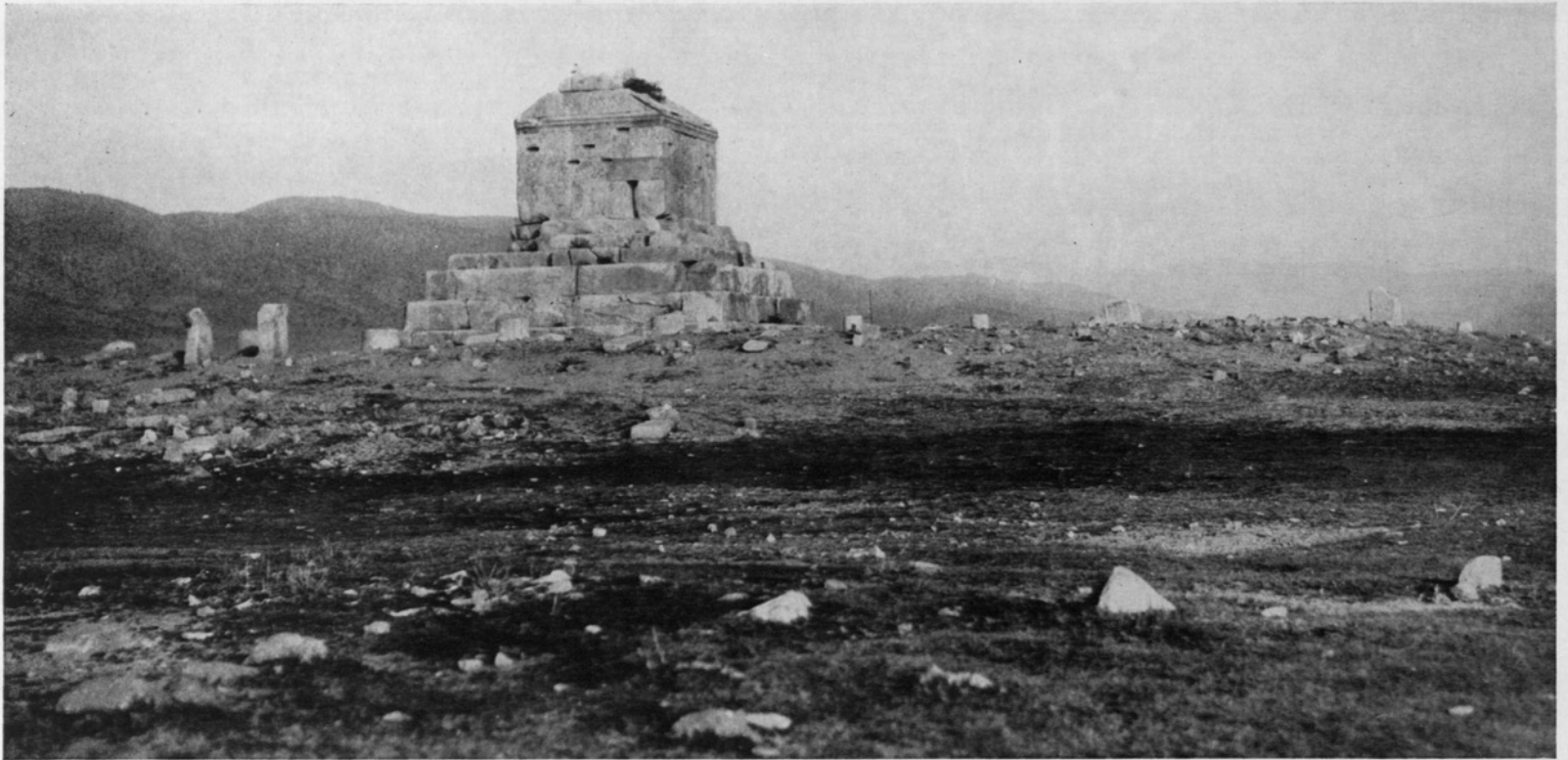


A



B

FIG. 5. PASARGADAE. OBLIQUE AIR VIEWS. *A*. TOMB OF CYRUS THE GREAT (May 20, 1936; 7:16 A.M.; direction, approximately NE). *B*. TOWER (May 20, 1936; 7:17 A.M.; direction, approximately SE)

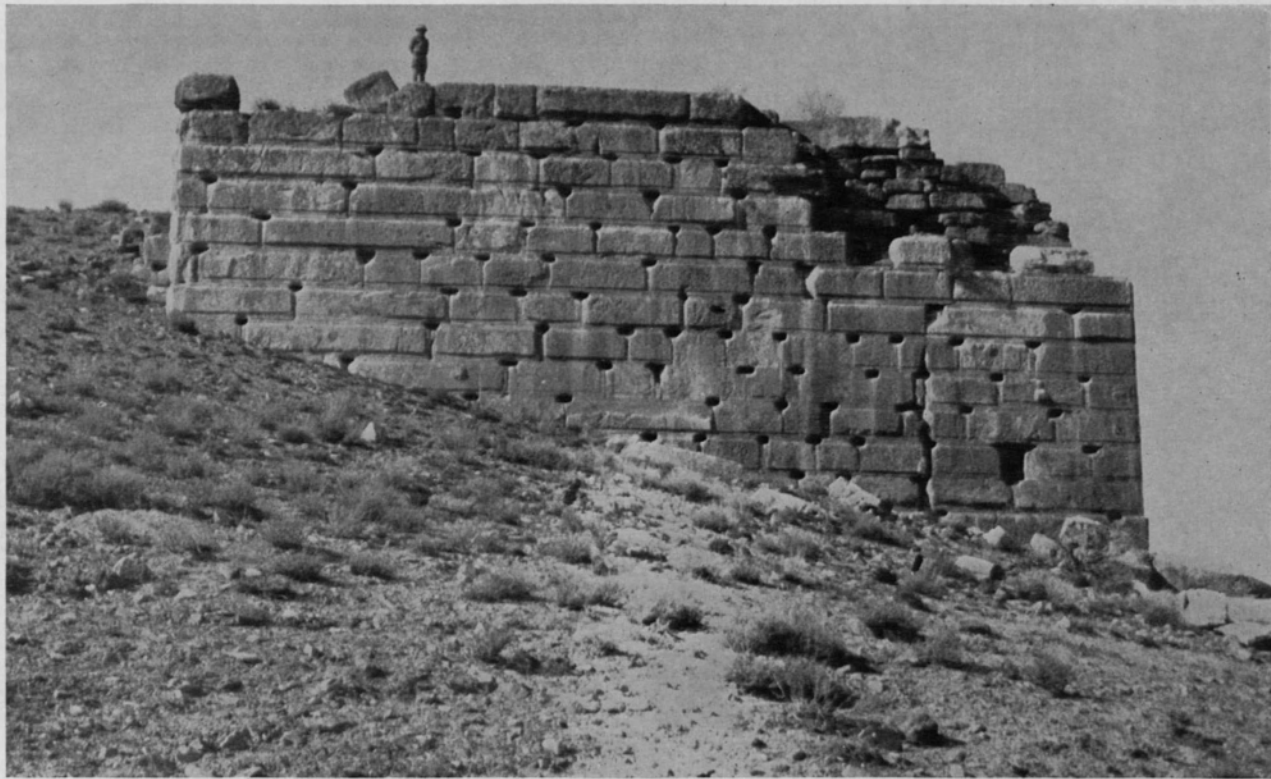


A



B

FIG. 6. PASARGADAE. *A*. REAR VIEW OF TOMB OF CYRUS THE GREAT (*direction, approximately W*).
B. FRONT OF TOWER (*direction of view, approximately S*)



A



B



C

FIG. 7. PASARGADAE. *A*. NORTHEAST BASTION OF PLATFORM. *B*. RELIEF OF GENIE ON GATE STRUCTURE. *C*. ANTA OF AUDIENCE PALACE