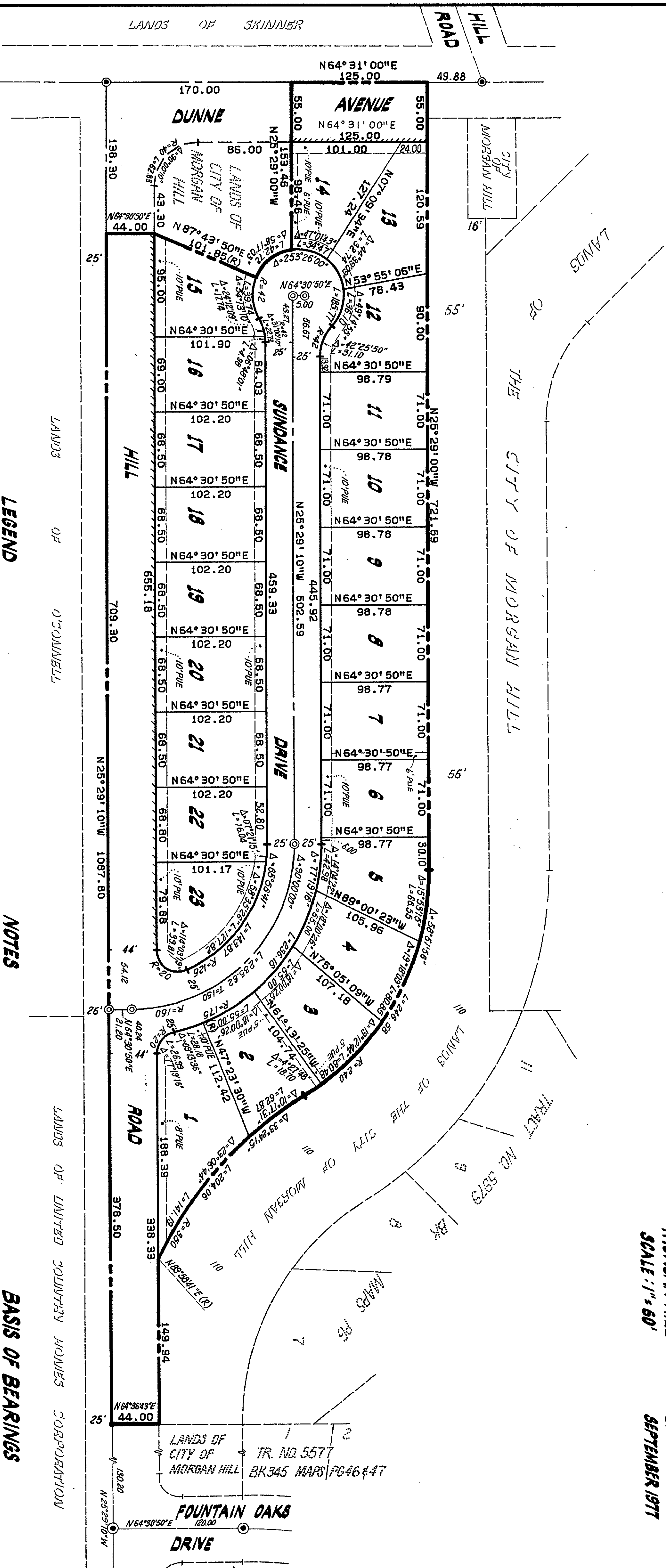


# TRACT NO. 6228

CONSISTING OF TWO SHEETS  
BEING A PORTION OF CATHERINE DUNNE  
RANCH, MAP NO. 5, AND LYING WITHIN  
THE CITY OF  
MORGAN HILL  
CALIFORNIA  
SEPTEMBER 1977  
SCALE 1" = 60'



## LEGEND

- ⊙ INDICATES STANDARD CITY MONUMENT FOUND.
- ⊙ INDICATES STANDARD CITY MONUMENT SET.
- PUE INDICATES PUBLIC UTILITY EASEMENT.
- ||||| INDICATES NO VEHICULAR ACCESS.

## NOTES

THE BLUE BORDER LINE INDICATES THE  
BOUNDARY OF LAND SUBDIVIDED BY  
THIS MAP.

ALL DISTANCES AND DIMENSIONS ARE  
GIVEN IN FEET AND DECIMALS THEREOF.

A SOIL REPORT ON THIS PROPERTY HAS  
BEEN PREPARED BY TERRARESEARCH INC.  
DATED NOVEMBER, 1971.

## BASIS OF BEARINGS

THE BEARING OF N25°29'10"W ALONG  
THE CENTERLINE OF HILL ROAD AS SHOWN  
ON TRACT NO. 5577, FILED FOR RECORD IN  
BK. 345 OF MAPS, AT PAGES 46 & 47 SANTA  
CLARA COUNTY RECORDS, WAS TAKEN  
AS THE BASIS OF BEARINGS SHOWN HEREON.

RECORDED 7-25-79

FILE NO. 445287 BK. 446 MAPS, PAGES 30 & 31.

MacKay & Sampa  
CIVIL ENGINEERS  
SAN JOSE CALIFORNIA

SHEET 2 OF 2 SHEETS

6006  
3893-7