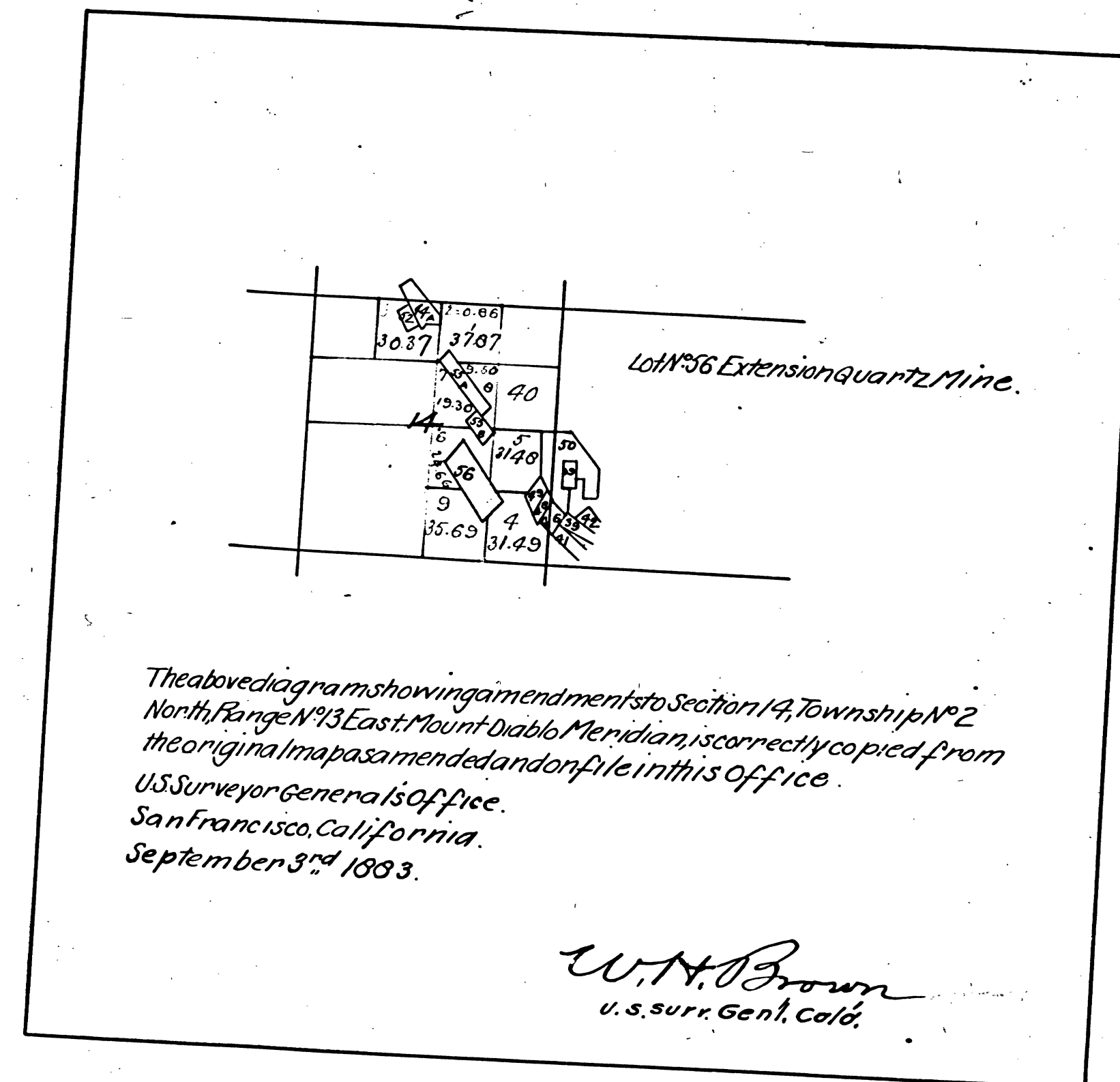
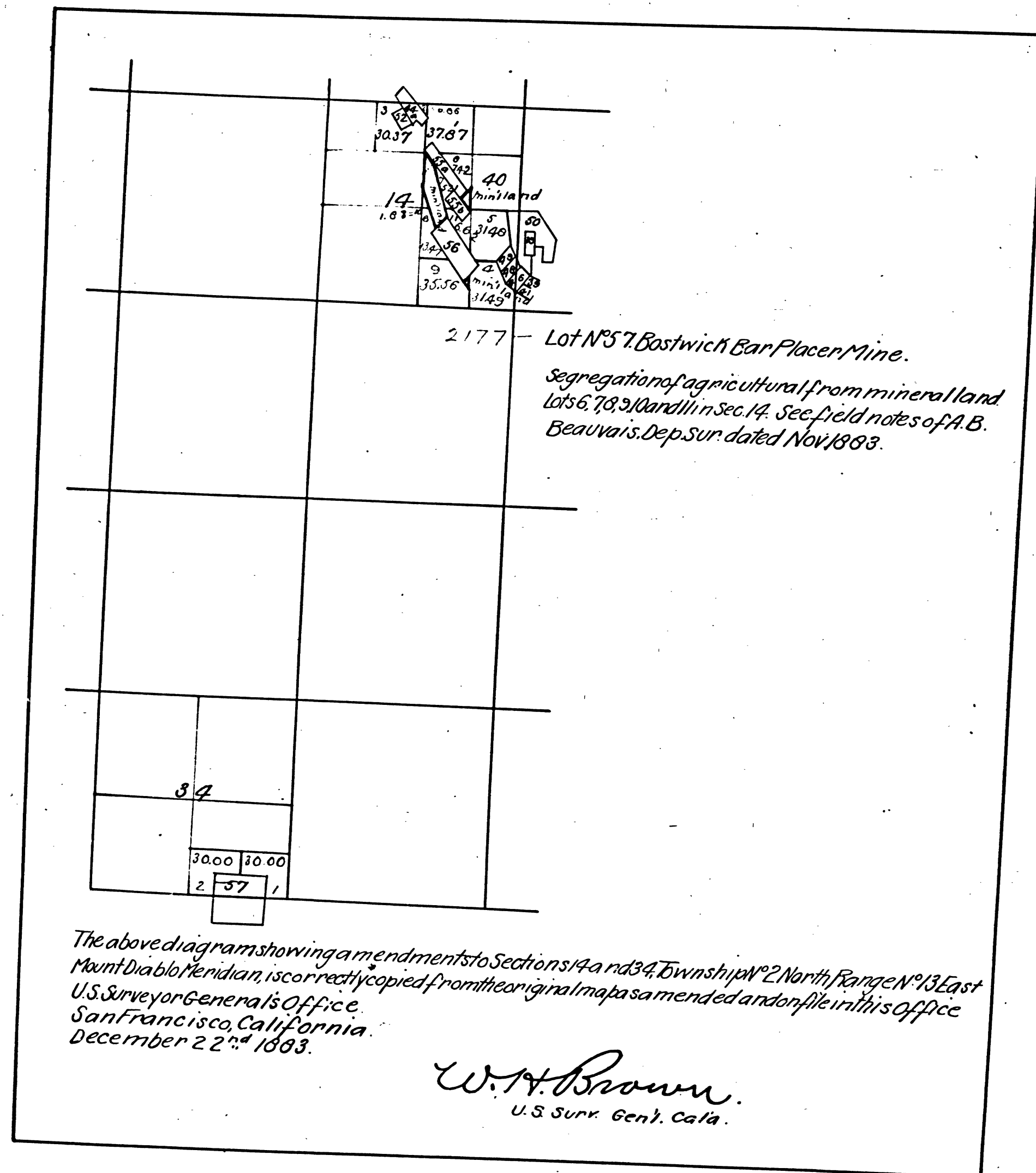


Township N° 2 North, Range N° 13 East, Mount Diablo Meridian.

G. J.  
1883



DEPARTMENT OF THE INTERIOR,  
GENERAL LAND OFFICE,  
Washington, D. C. Feb. 5, 1883.  
I hereby certify that this is a true copy  
of the plats of official survey of the lands  
to which it relates, on file in this office.

Recorder, General Land Office.

41 118

T 2 N R 13 E M D

CHAINS  
20 40 60 80 120

BLM 34