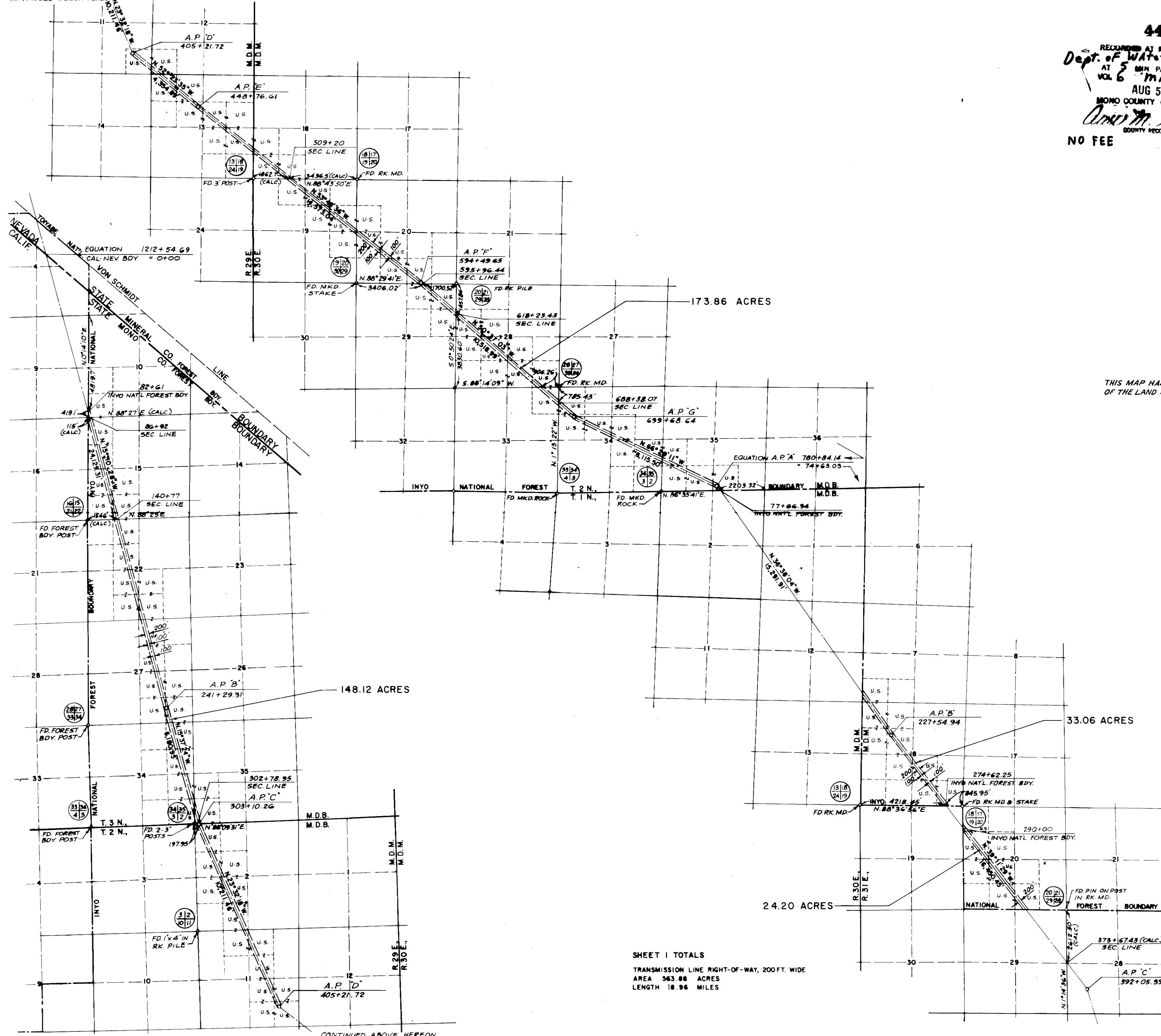
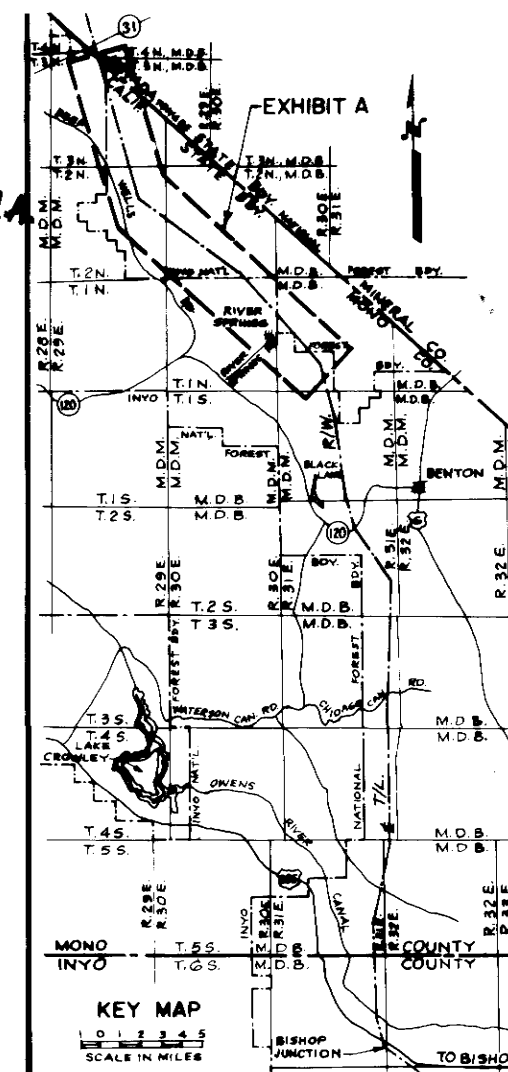


CONTINUED BELOW HEREON



440
 RECEIVED AT REQUEST OF
 Dept. of Water & Power, City of L.A.
 AT 5 MIN. PAST 2 P.M. 1970
 AUG 5 1970
 MONO COUNTY CALIFORNIA
 COUNTY RECORDED & COMPALED
 NO FEE INDEXED



THIS MAP HAS BEEN EXAMINED FOR CONFORMANCE WITH THE REQUIREMENTS
 OF THE LAND SURVEYORS ACT THIS 5th DAY OF August, 1970.

Richard L. Paul
 COUNTY SURVEYOR

THIS MAP IS A PART OF THE APPLICATION FOR AN EASEMENT
 (ACT OF MARCH 4, 1911, AS AMENDED), FOR THE SYLMAR-OREGON
 H.V.D.C. TRANSMISSION LINE WITHIN THE INYO NATIONAL FOREST
 MADE BY THE UNDERSIGNED THIS 21st DAY OF MAY, 1968.

DEPARTMENT OF WATER AND POWER
 OF THE CITY OF LOS ANGELES

AUTHORIZED BY RESOLUTION NO. 697
 ADOPTED March 14, 1967

Nathan O. Freedman
 NATHAN O. FREEDMAN
 PRESIDENT OF THE BOARD OF WATER AND
 POWER COMMISSIONERS OF THE
 CITY OF LOS ANGELES

ATTEST:
 Opal L. Murphy
 CLERK

U.S. = LANDS OF THE UNITED STATES
 P. = PATENTED LANDS
 BEARINGS ARE BASED ON
 CALIFORNIA COORDINATE
 SYSTEM - ZONE III

EXHIBIT A

DETAIL MAP SHOWING PORTIONS OF
 SYLMAR-OREGON H.V.D.C.
 TRANSMISSION LINE
 OF THE
 CITY OF LOS ANGELES
 LYING WHOLLY WITHIN
 THE INYO NATIONAL FOREST

SHEET 1 OF 1 SCALE: 1" = 3400'

APPLICATION UNDER ACT OF MARCH 4, 1911 AS AMENDED,
 EASEMENT DATED THIS 21st DAY OF MAY, 1968.
 PREPARED BY Walter H. Gray
 SENIOR SURVEY SUPERVISOR
 DEPARTMENT OF WATER & POWER
 OF THE CITY OF LOS ANGELES

SHEET I TOTALS
 TRANSMISSION LINE, RIGHT-OF-WAY, 200FT. WIDE
 AREA 563.88 ACRES
 LENGTH 18.96 MILES