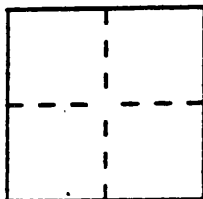


CORNER RECORDDocument Number 1034City of HAYWARDCounty of ALAMEDA, CaliforniaBrief Legal Description LOT 3, PM 5711 (196 PM 77)**CORNER TYPE**

Government Corner ☐ Control ☐
 Meander ☐ Property ☐
 Rancho ☐ Other ☒
 Date of Survey JULY 8, 1998

**COORDINATES
(Optional)**

N. _____
 E. _____
 Zone _____ Datum _____
 Elev. _____

Corner — Left as found ☐ Found and tagged ☐ Established ☐ Reestablished ☒ Rebuilt ☐

Identification and type of corner found: Evidence used to identify or procedure used to establish or reestablish the corner:

FOUND RECORD MONUMENTS PER 196 PM 77. SET NEW CORNERS AND LINE POINTS
PER ATTACHED PLAT.

A description of the physical condition of the monument as found and as set or reset: SEE ATTACHED PLAT

SURVEYOR'S STATEMENT

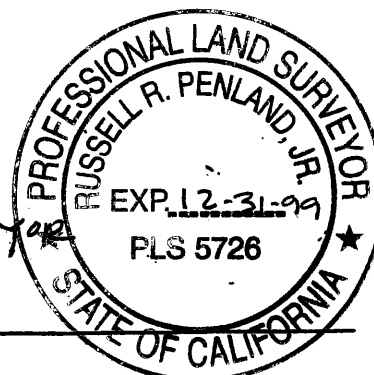
This Corner Record was prepared by me or under my direction in conformance with
 the Land Surveyors' Act on JULY 8, 1998.

Signed [Signature] L.S. or R.C.E. Number 6690

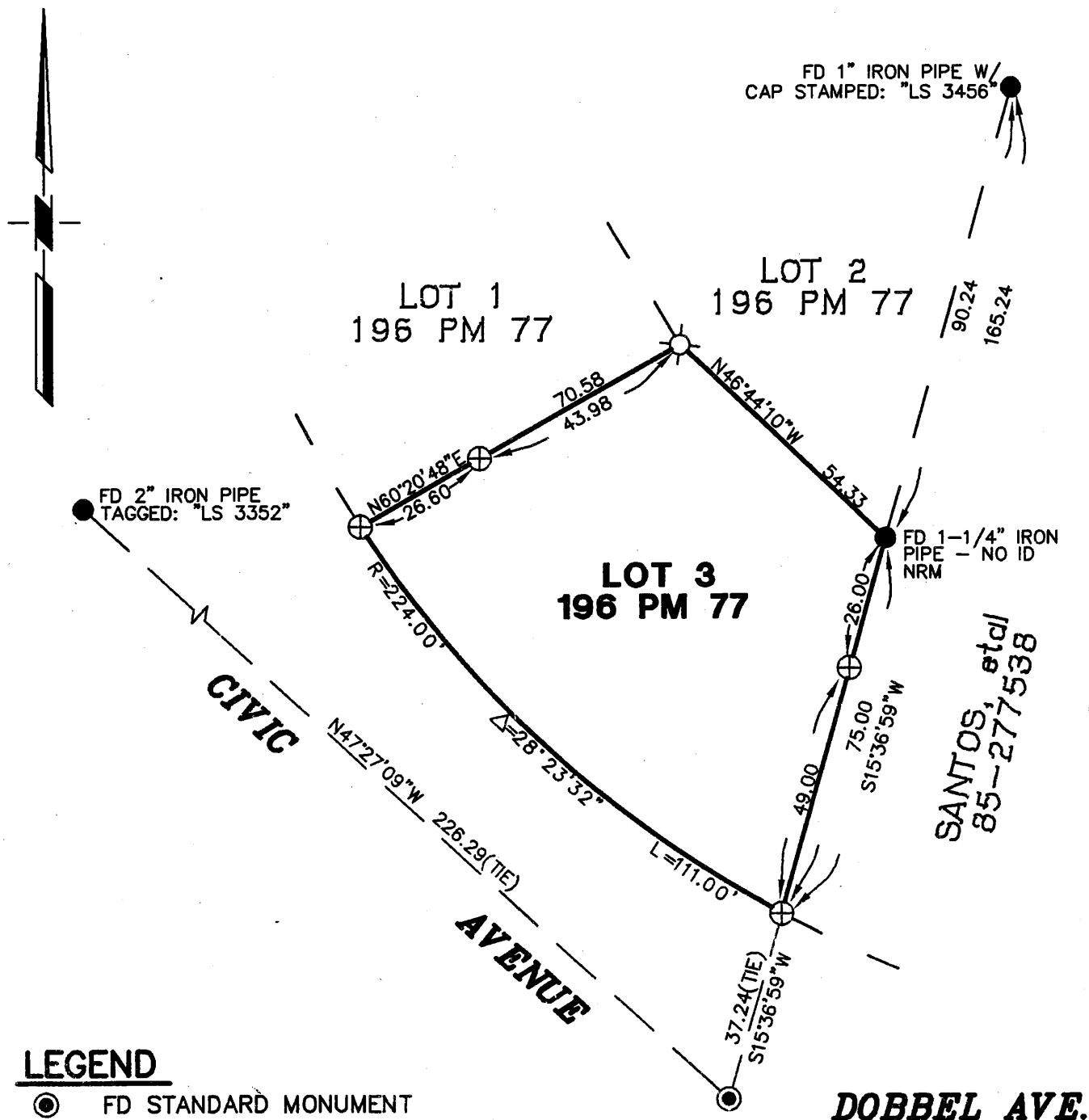
**COUNTY SURVEYOR'S STATEMENT**

This Corner Record was received 6-29-1998 and examined
 and filed 5-24-1999.

Signed [Signature] Title Deputy County Surveyor



County Surveyor's Comment _____



LEGEND

- ⊙ FD STANDARD MONUMENT
- FD IRON PIPE AS NOTED
- ⊕ SET 1/2" REBAR & PLASTIC CAP TAGGED: "LS 6690"
- ⊗ SET NAIL AND SHINER STAMPED: "LS 6690"
- NRM NON RECORD MONUMENT

CORNER RECORD
APN 081D-1615-098

SCALE: 1" = 30'
DATE: 07-09-98
JOB 456-98

SCHELL & MARTIN, INC.
CIVIL ENGINEERING & LAND SURVEYING
3377 MT. DIABLO BOULEVARD
LAFAYETTE, CALIFORNIA 94549
925.283.8111