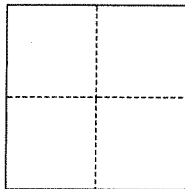


# CORNER RECORD

Agency Index BK 144 PG 7  
Document Number CR 15818

City of Unincorporated Eden Township County of Alameda, California  
Brief Legal Description Monument at the intersection of Sprague Court & Somerset Avenue

## CORNER TYPE



- ☐ Government Corner ☒ Control  
☐ Meander ☐ Property  
☐ Rancho ☐ Other

Date of Survey September 20, 2021

## COORDINATES (Optional)

N. \_\_\_\_\_ E. \_\_\_\_\_  
Elevation \_\_\_\_\_  
Units ☐ Metric ☒ U.S. Survey Foot  
Horizontal Datum \_\_\_\_\_  
Zone \_\_\_\_\_ Epoch Date \_\_\_\_\_  
Vertical Datum \_\_\_\_\_  
☐ Complies with Public Resources Code §§8801-8819  
☐ Complies with Public Resources Code §§8890-8902

PLS Act Ref.: ☐ 8765(d) ☒ 8771 ☐ 8773 ☐ Other:  
Corner/  
Monument: ☒ Left as found ☐ Established ☐ Rebuilt ☒ Pre-Construction  
☐ Found and tagged ☐ Reestablished ☒ Referenced ☐ Post-Construction

Narrative of corner identified and monument as found, set, reset, replaced, or removed:

☒ See sheet #2 for description(s):

Found railroad spike monument. Set reference ties prior to construction.  
Alameda County Monument ID #PZ55K6

## SURVEYOR'S STATEMENT

This Corner Record was prepared by me or under my direction in conformance with

the Professional Land Surveyors' Act on September 24, 2021

Signed Denise Baker P.L.S. or R.C.E. No. PLS 7947



## COUNTY SURVEYOR'S STATEMENT

This Corner Record was received

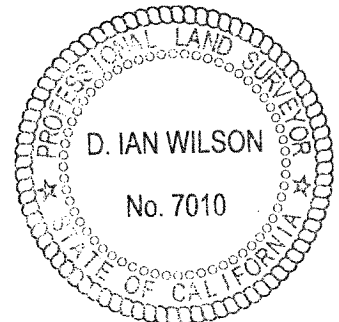
and examined and filed

JAN 9 6 2022

Signed D. Ian Wilson P.L.S. or R.C.E. No. 7010

Title ALAMEDA COUNTY SURVEYOR

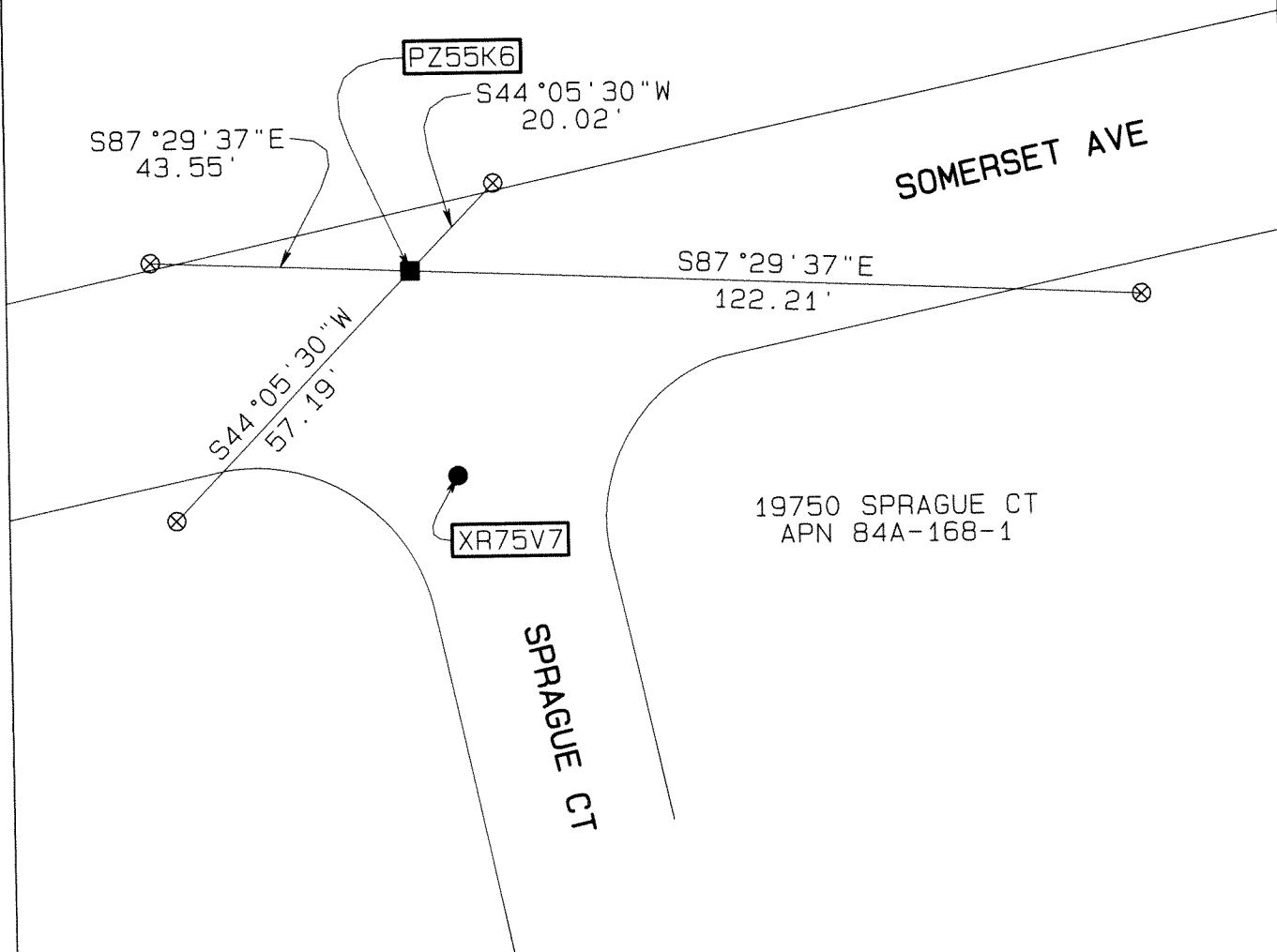
County Surveyor's Comment





- FOUND RAILROAD SPIKE MONUMENT
- FOUND PIN MONUMENT  
IN MONUMENT WELL
- ⊗ SET MAG NAIL & TAG (LS 7947)  
IN CONCRETE CURB

AA###A# ALAMEDA COUNTY MONUMENT ID



Prepared by:  
CONSTRUCTION SURVEY, INC.  
800 BERKELEY WAY, #201  
BERKELEY, CA 94710

JOB NO. 210901  
SCALE: 1"=30'  
9/21/2021