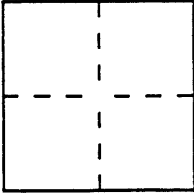


CORNER RECORDDocument Number CR 403City of OAKLAND County of ALAMEDA, CaliforniaBrief Legal Description LOT 3, BLOCK 2, RESUBD. OF BLOCKS 9, 10, ETC ROCK RIDGE TERRACE**CORNER TYPE**

Government Corner ☐ Control ☐
 Meander ☐ Property ☒
 Rancho ☐ Other ☐
 Date of Survey _____

**COORDINATES
(Optional)**

N. _____
 E. _____
 Zone _____ Datum _____
 Elev. _____

Corner — Left as found ☒ Found and tagged ☐ Established ☐ Reestablished ☒ Rebuilt ☐

Identification and type of corner found: Evidence used to identify or procedure used to establish or reestablish the corner:

FOUND OLD CROSSES ON CURB PER ORIGINAL PLOT PLAN
IN CITY FILES.

REFER TO MAP OF RESUBDIVISION OF BLOCKS 9, 10, 11, 12, 13
14 AND A PORTION OF BLOCK 16 OF ROCK RIDGE TERRACE,
FILED 3/16/11 IN MB 26, PG 15, ALAMEDA CO. O.R.

A description of the physical condition of the monument as found and as set or reset: _____

SEE DIAGRAM ON BACK

SURVEYOR'S STATEMENT

This Corner Record was prepared by me or under my direction in conformance with
 the Land Surveyors' Act on JUNE 6 TH 19 94.

Signed AG Masso L.S. or R.C.E. Number 30442

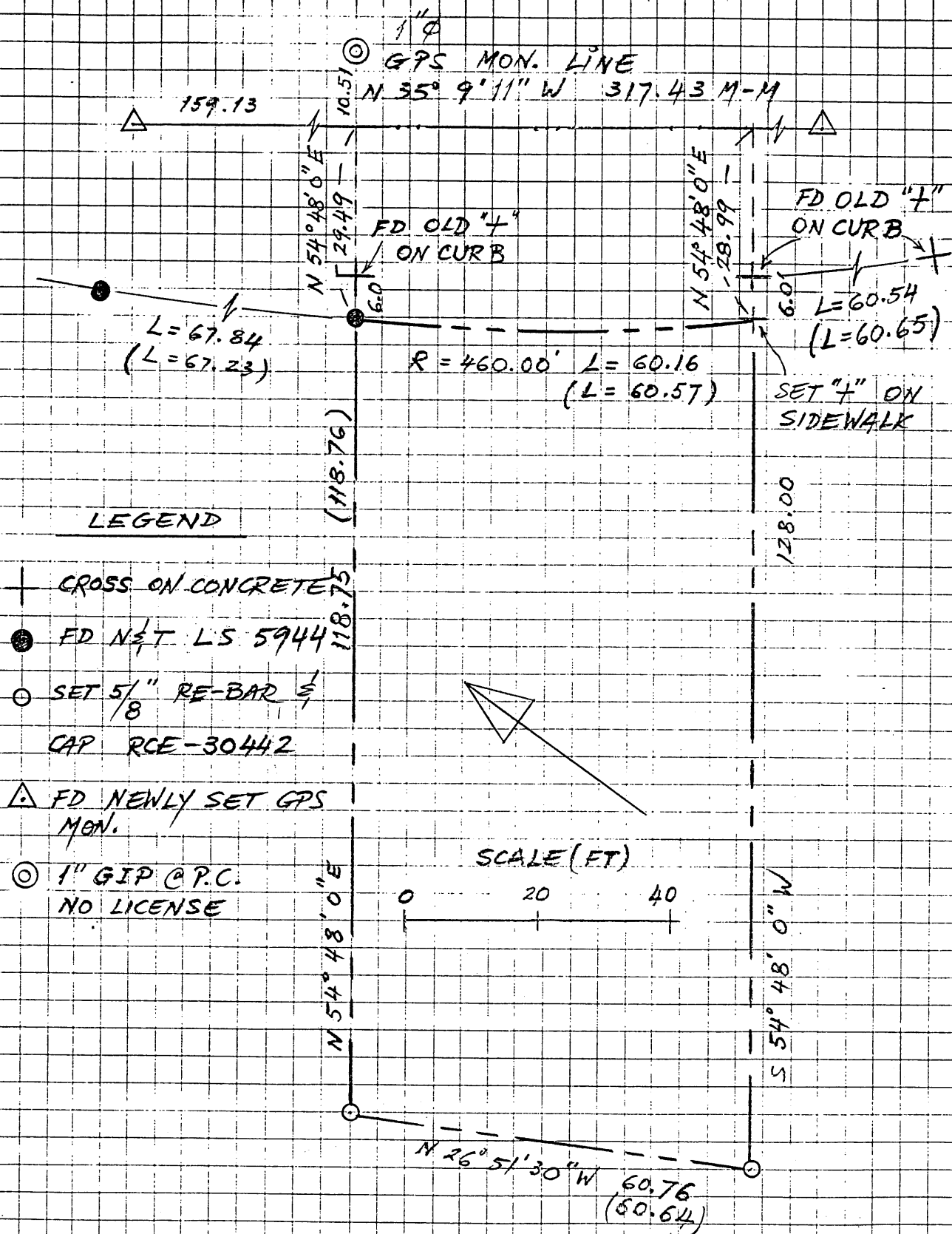
**COUNTY SURVEYOR'S STATEMENT**

This Corner Record was received December 28 19 95 and examined
 and filed MARCH 4 19 96

Signed Russell Penland Title Deputy County Surveyor Exp. 12-31-99



County Surveyor's Comment _____



CROSS ON CONCRETE

FD NET LS 5944

SET 5/8" RE-BAR $\frac{1}{1}$
CAP RCE-30442

FD NEWLY SET GPS
MON.

1" GIP @ P.C.
NO LICENSE

SCALE (FT)

A horizontal number line with three major tick marks. The first tick mark on the left is labeled '0'. The second tick mark is labeled '20'. The third tick mark on the right is labeled '40'.