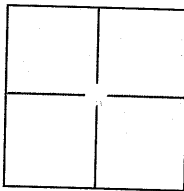


CORNER RECORD

BK 58 PG 33City of FREMONTDocument Number CR 6093Brief Legal Description LOTS 35, 36 TRACT 633, 8 MAPS 40County of ALAMEDA, California

CORNER TYPE

Government Corner ☐ Control ☐
Meander ☐ Property ☒
Rancho ☐ Other ☐

Date of Survey 3-11-2014

COORDINATES(Optional)

N. _____
E. _____
Zone _____ NAD27 ☐ NAD83 ☐
NAD83 Epoch _____
Elev. _____
Vert. Datum: NGVD29 ☐ NAVD88 ☐
Meas. Units: Metric ☐ Imperial ☐

Corner - Left as found ☐ Found and tagged ☐ Established ☐ Reestablished ☒ Rebuilt ☐

Identification and type of corner found: Evidence used to identify or procedure used to establish or reestablish the corner:

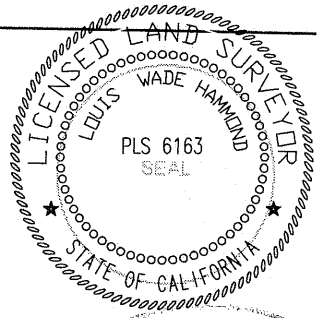
HELD TO POINTS AS SHOWN ON REVERSEFOUND POINTS AS SHOWN ON REVERSE

A description of the physical condition of the monument as found and as set or reset

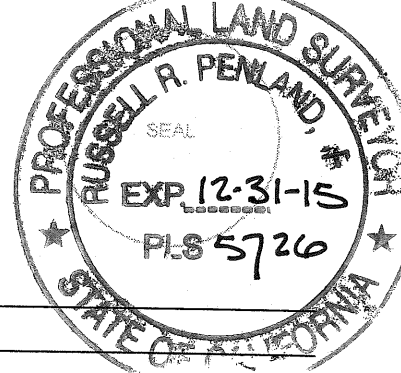
FOUND POINTS AS SHOWN ON REVERSE

SURVEYOR'S STATEMENT

This Corner Record was prepared by me or under my direction in conformance with
the Land Surveyor's Act on 3-11-2014

Signed [Signature] P.L.S. or R.C.E. No.: PLS 6163

COUNTY SURVEYOR'S STATEMENT

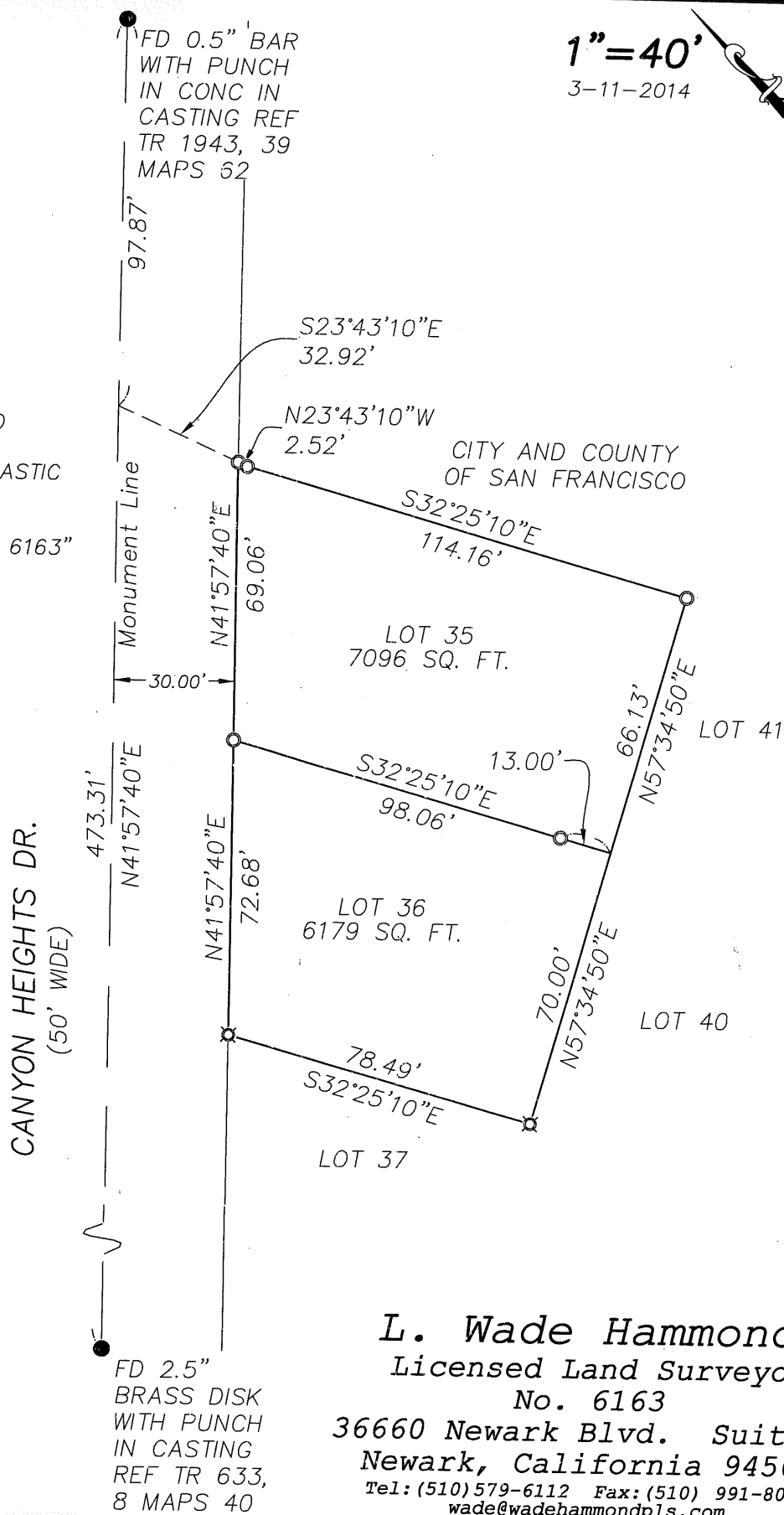
This Corner Record was received 3-21-14 and examinedand filed 4-9-14Signed [Signature] P.L.S. or R.C.E. No.: 5726Title COUNTY SURVEYOR
County Surveyor's Comment _____NT44C3

NOTES

ALL DISTANCES
AND DIMENSIONS
ARE IN FEET &
DECIMALS.

LEGEND

- FD POINT AS NOTED
- SET 3/4" IP W/ PLASTIC
PLUG PLS 6163
- ⊠ SET NAIL/TAG "PLS 6163"



L. Wade Hammond
Licensed Land Surveyor
No. 6163

36660 Newark Blvd. Suite C
Newark, California 94560

Tel: (510) 579-6112 Fax: (510) 991-8054
wade@wadehammondpls.com