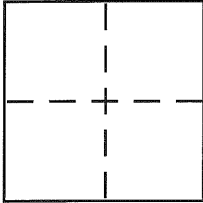


BK45 Pg 9

CORNER RECORDDocument Number CR 4961City of BerkeleyCounty of Alameda, CaliforniaBrief Legal Description City Monument B2114**CORNER TYPE**

Government Corner ☐ Control ☒
 Meander ☐ Property ☐
 Rancho ☐ Other ☐
 Date of Survey 4-1-2012

COORDINATES (Optional)

N. _____
 E. _____
 Zone _____ NAD27 ☐ NAD83 ☐
 NAD83 Epoch _____
 Elev. _____
 Vert. Datum: NGVD29 ☐ NAVD88 ☐
 Meas. Units: Metric ☐ Imperial ☐

Corner - Left as found ☒ Found and tagged ☐ Established ☐ Reestablished ☐ Rebuilt ☐

Identification and type of corner found: Evidence used to identify or procedure used to establish or reestablish the corner:

Found City Monument

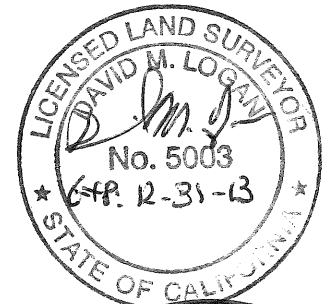
In compliance with Section 8771 of the Professional Land Surveyors' Act, this corner record is being filed to establish the position of an existing monument prior to street reconstruction

A description of the physical condition of the monument as found and as set or reset:

See page 2**SURVEYOR'S STATEMENT**

This Corner Record was prepared by me or under my direction in conformance with the Land Surveyor's Act on April 11, 2012

Signed [Signature] P.L.S. or ~~R.C.E.~~ No. 5003

**COUNTY SURVEYOR'S STATEMENT**

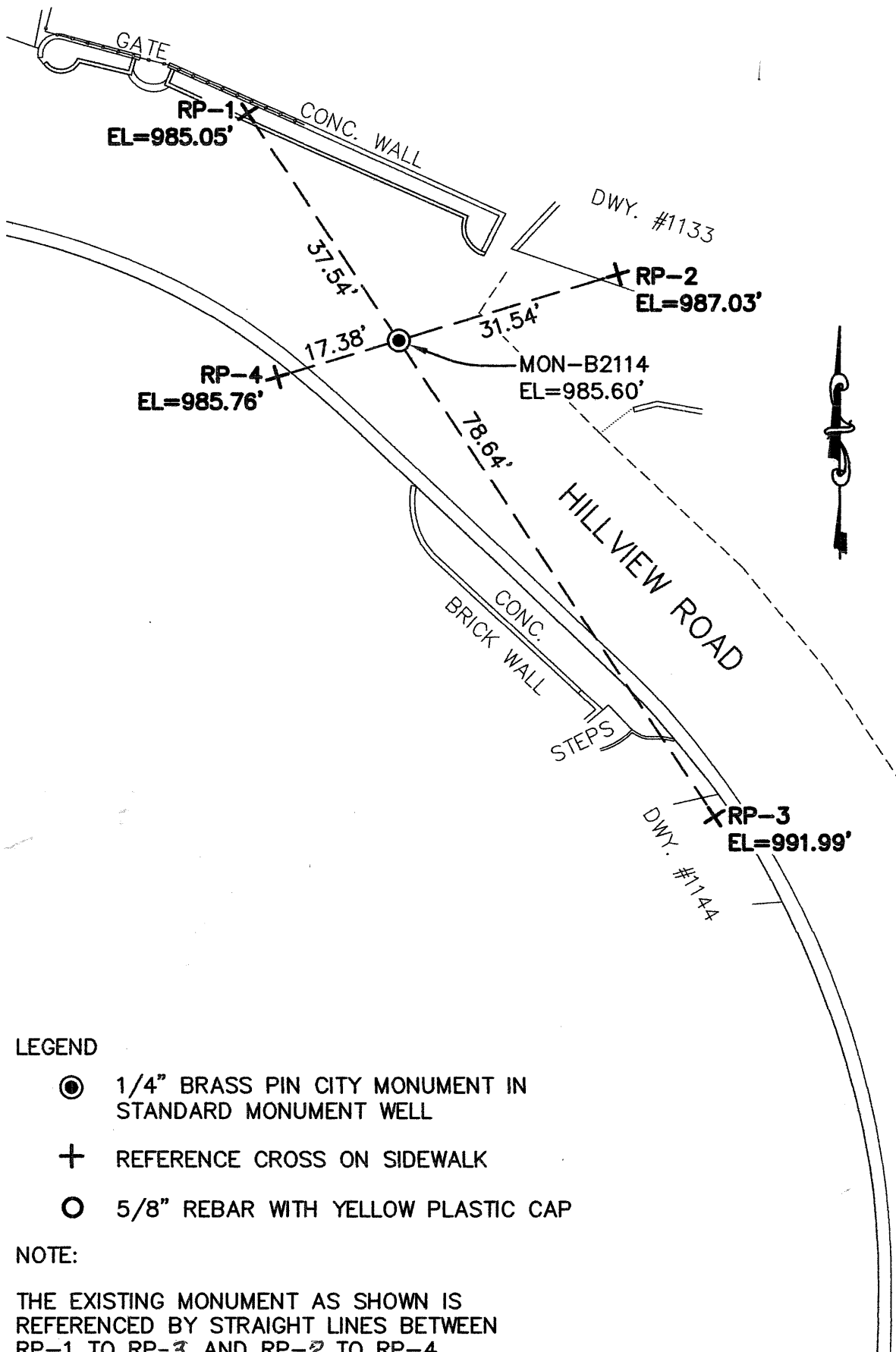
This Corner Record was received 5-2-2012
 and examined and filed 5-20-2012

Signed [Signature] P.L.S. or R.C.E. No. 5726

Title COUNTY SURVEYOR

County Surveyor's Comment _____





LEGEND

- ⊙ 1/4" BRASS PIN CITY MONUMENT IN STANDARD MONUMENT WELL
- ⊕ REFERENCE CROSS ON SIDEWALK
- 5/8" REBAR WITH YELLOW PLASTIC CAP

NOTE:

THE EXISTING MONUMENT AS SHOWN IS REFERENCED BY STRAIGHT LINES BETWEEN RP-1 TO RP-3 AND RP-2 TO RP-4.