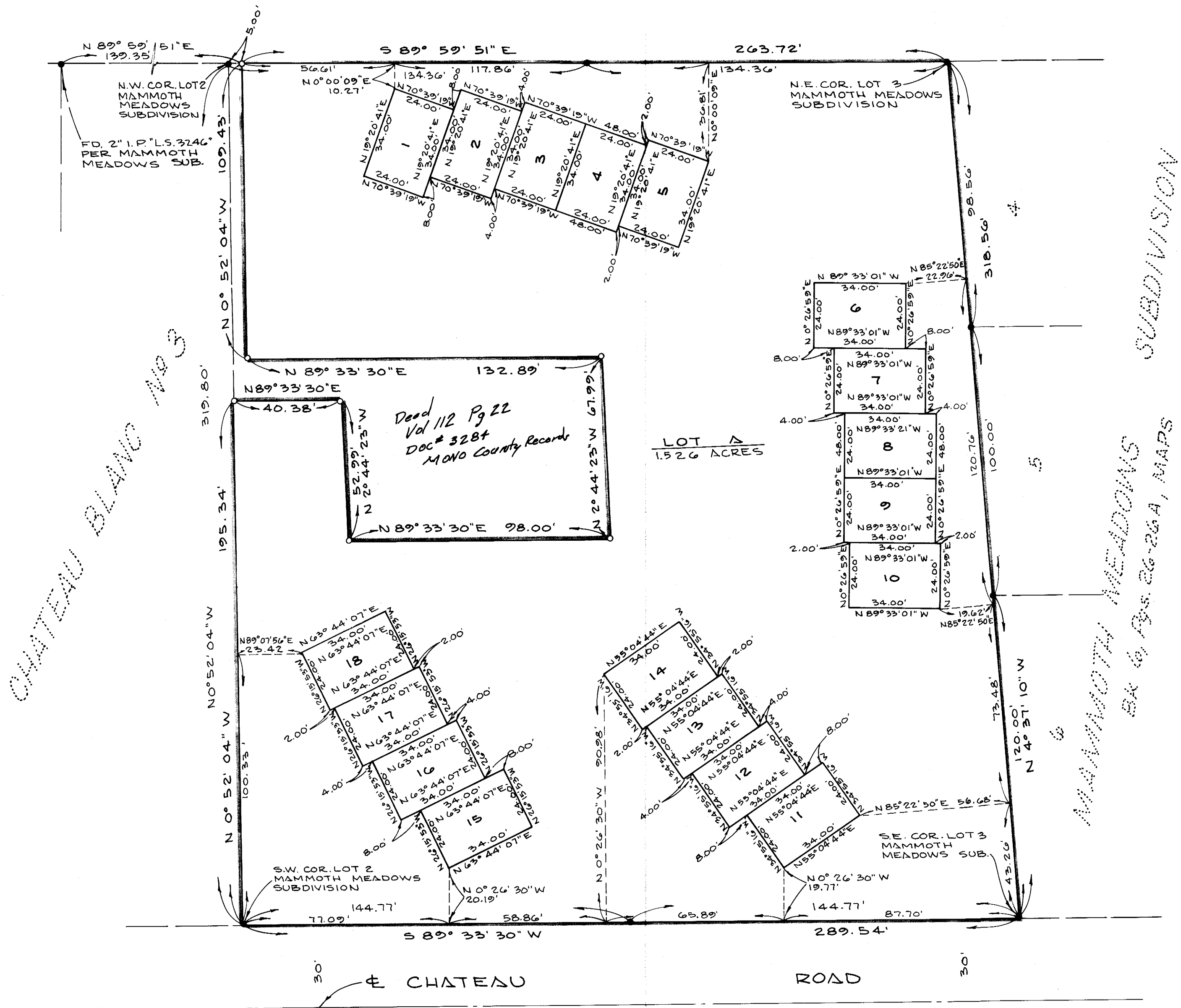
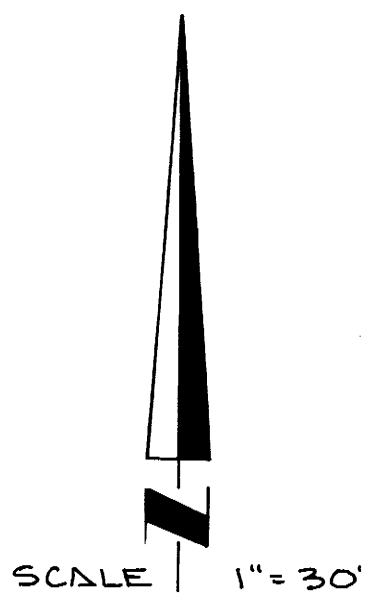


CHATEAU BLANC No 4

MONO COUNTY, CALIFORNIA
BEING A SUBDIVISION OF LOT 3 AND A PORTION OF LOT 2
OF MAMMOTH MEADOWS SUBDIVISION PER MAP THEREOF
RECORDED IN BOOK 6, PAGES 26 AND 26A OF MAPS,
RECORDS OF MONO COUNTY, CALIFORNIA

JUNE, 1970
18 LOTS & LOT A

GERALD F. OLDENBURG, L.S. 3246
1.863 ACRES



Note:

All lots shown hereon are residence lots other than Lot A.

BASIS OF BEARINGS:

BEARINGS HEREON ARE BASED ON THE WEST LINE OF LOT 2 OF MAMMOTH MEADOWS SUBDIVISION BEING N0°52'04"W PER MAP THEREOF RECORDED IN BOOK 6, PAGES 26 AND 26A OF MAPS, RECORDS OF MONO COUNTY.

MONUMENT NOTES:

- INDICATES FOUND 2" X 2" TAGGED "L.S. 3246" PER MAMMOTH MEADOWS SUBDIVISION, BOOK 6, PAGES 26 AND 26A MAPS.
- INDICATES SET 2" IRON PIPE TAGGED "L.S. 3246"

28.7-89.16A