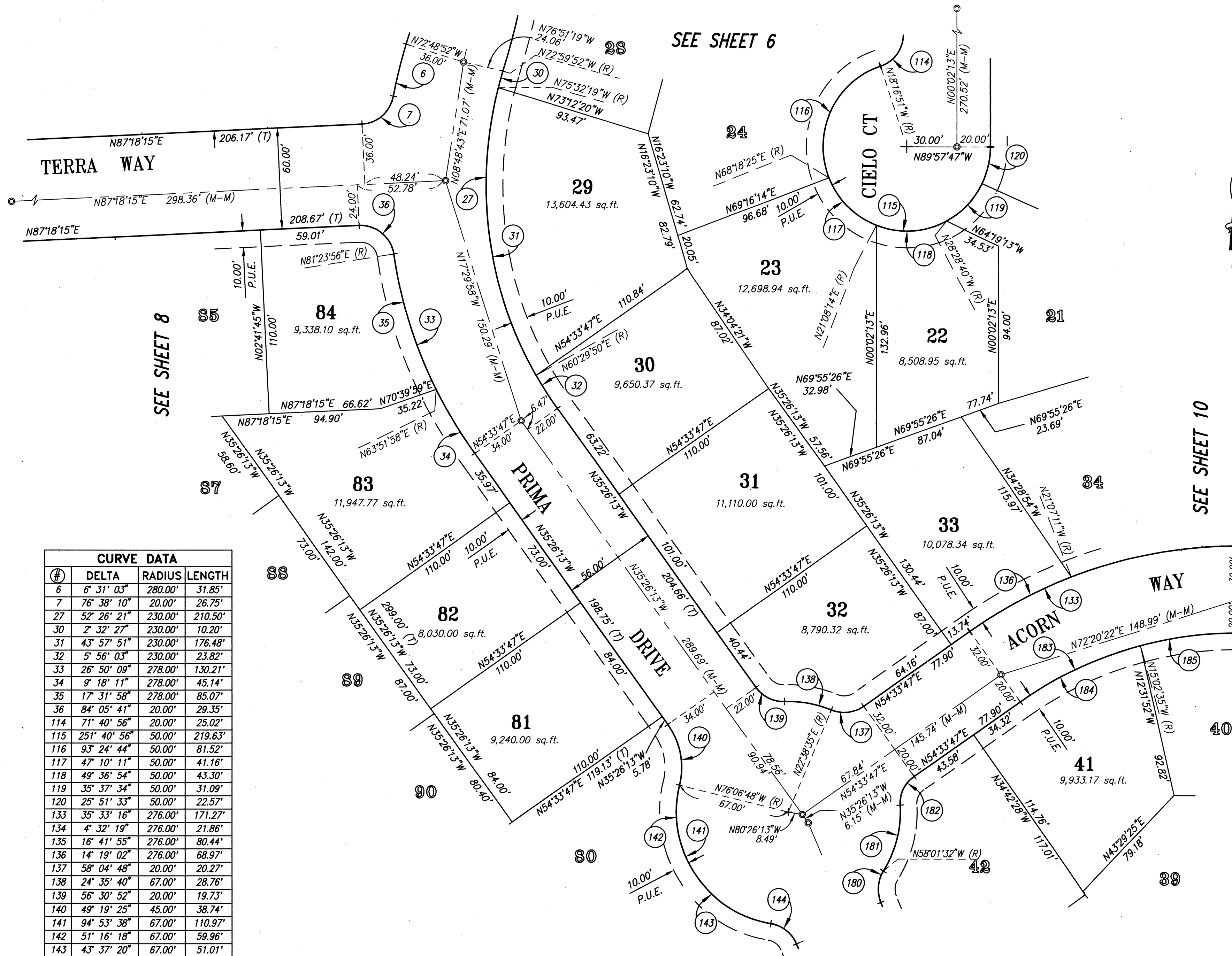


TRACT 7087
MAP BK 250
1895



SEE SHEET 6

SEE SHEET 8

SEE SHEET 10

SEE SHEET 12

BASIS OF BEARINGS

BEARINGS SHOWN HEREON ARE BASED UPON THE LINE BETWEEN FOUND MONUMENTS ON CONCANNON BOULEVARD SHOWN ON THE MAP OF TRACT 5866 (217 M 86) AS N88°53'25"W.

LEGEND OF TERMS & SYMBOLS

- BOUNDARY OF TRACT 7087
- EASEMENT LINE
- MONUMENT LINE
- LOT LINE
- RIGHT OF WAY LINE
- CENTER LINE
- CITY LIMIT LINE

- SET STREET MONUMENT, LS 5311
- FND STREET MONUMENT AS NOTED
- SET 5/8" REBAR & PLASTIC CAP LS 5311
- FOUND SURVEY POINT AS NOTED
- IB FOUND IRON BOLT, AS NOTED
- RRS FOUND RAILROAD SPIKE, AS NOTED
- FD FOUND NAIL, AS NOTED
- IP IRON PIPE
- PM PARCEL MAP
- # M # BOOK NO. OF MAPS & PAGE NO.
- EASEMENT NUMBER
- P.U.E. PUBLIC UTILITY EASEMENT
- E.V.A.E. EMERGENCY VEHICLE ACCESS EASEMENT
- L.E. LANDSCAPE EASEMENT
- S.S.E. SANITARY SEWER EASEMENT
- S.D.E. STORM DRAINAGE EASEMENT
- S.O.E. STORMWATER OVERFLOW EASEMENT
- (M-M) MONUMENT TO MONUMENT
- (M-TL) MONUMENT TO TRACT LIMIT
- M, MON MONUMENT
- (R) RADIAL BEARING
- (T) TOTAL
- sq.ft. or s.f. SQUARE FEET
- STREET CENTERLINE
- [] RECORD INFORMATION, REF. NOTED
- { } RECORD INFORMATION, REF. NOTED
- ////////// RELINQUISHMENT OF ABUTTER'S RIGHTS AND PRIVATE ACCESS PROHIBITED

CURVE DATA			
#	DELTA	RADIUS	LENGTH
6	6° 31' 03"	280.00'	31.85'
7	76° 38' 10"	20.00'	26.75'
27	52° 26' 21"	230.00'	210.50'
30	2° 32' 27"	230.00'	10.20'
31	43° 57' 51"	230.00'	176.48'
32	5° 56' 03"	230.00'	23.82'
33	26° 50' 09"	278.00'	130.21'
34	9° 18' 11"	278.00'	45.14'
35	17° 31' 58"	278.00'	85.07'
36	84° 05' 41"	20.00'	29.35'
114	71° 40' 56"	20.00'	25.02'
115	251° 40' 56"	50.00'	219.63'
116	93° 24' 44"	50.00'	81.52'
117	47° 10' 11"	50.00'	41.16'
118	49° 36' 54"	50.00'	43.30'
119	35° 37' 34"	50.00'	31.09'
120	25° 51' 33"	50.00'	22.57'
133	35° 33' 16"	276.00'	171.27'
134	4° 32' 19"	276.00'	21.86'
135	16° 41' 55"	276.00'	80.44'
136	14° 19' 02"	276.00'	68.97'
137	58° 04' 48"	20.00'	20.27'
138	24° 35' 40"	67.00'	28.76'
139	56° 30' 52"	20.00'	19.73'
140	49° 19' 25"	45.00'	38.74'
141	94° 53' 38"	67.00'	110.97'
142	51° 16' 18"	67.00'	59.96'
143	43° 37' 20"	67.00'	51.01'
144	58° 31' 14"	20.00'	20.43'
180	54° 27' 40"	20.00'	19.01'
181	35° 29' 28"	67.00'	41.50'
182	58° 04' 47"	20.00'	20.27'
183	35° 33' 16"	224.00'	139.00'
184	20° 23' 38"	224.00'	79.73'
185	15° 09' 38"	224.00'	59.27'

TRACT 7087
PRIMA
A PORTION OF PLOT 21, BERNAL PORTION OF THE
RANCHO EL VALLE DE SAN JOSE (87-344604)
CITY OF LIVERMORE - CALIFORNIA
MILANI & ASSOCIATES
3480 BUSKIRK, SUITE 225
PLEASANT HILL, CALIFORNIA 94523
MARCH, 1999 SCALE 1"=40'