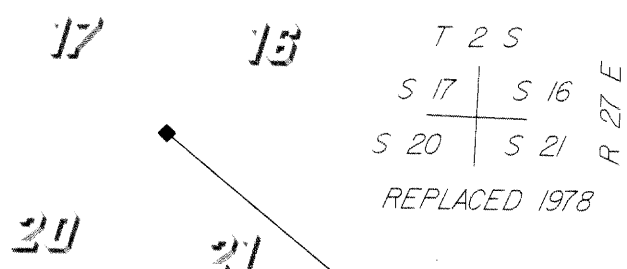
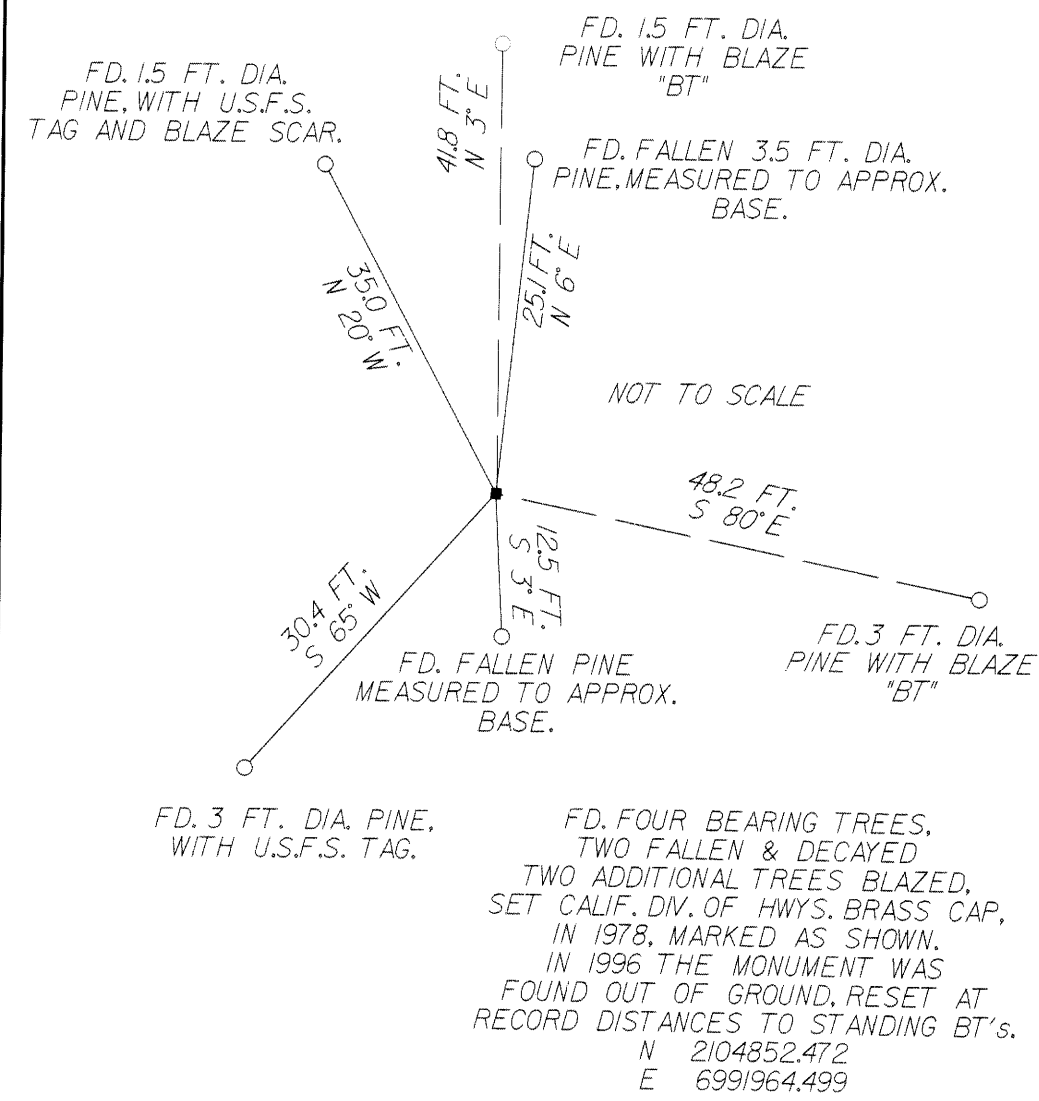


# RECORD OF SURVEY

## NO. 34 - 37

PM 35.7 RT.  
N 2106425.404  
E 6994514.685  
EL = 7962.73



R/W AT  
99.96 LT 106\*85.14 B.C.  
N 2105158.947  
E 6994408.635

106\*85.07  
99.92 LT.  
MARKED 106\*85.70  
BC 100 LT  
N 2105158.941  
E 6994408.604

BC 106\*85.14  
106\*83.11  
65.31 LT.  
N 2105180.065  
E 6994436.180

106\*84.69  
65.85 RT.  
N 2105267.011  
E 6994534.393

PM 35.5  
103\*21.92  
35.27 RT.  
N 2104972.250  
E 6994748.434  
EL = 7939.25

102.78 LT.  
103\*40.62

N 40\*21.37° W TO 94\*63.47° E

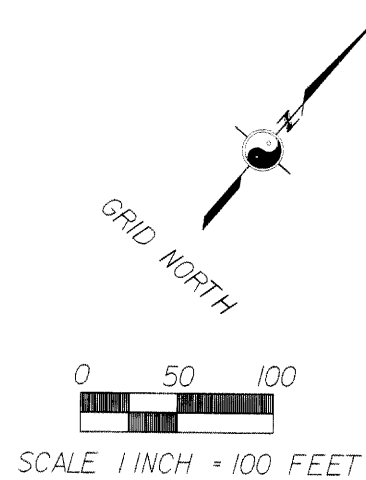
N 40\*49.45° W TO 94\*48.28° E

N 39\*45.44° W TO 94\*48.28° E

202.73 RT.  
100\*85.32

SECTION 13

T. 2 S., R. 27 E., M.D.M.



GEODETIC AZIMUTH = GRID AZIMUTH + CONVERGENCE ANGLE  
CONVERGENCE ANGLE AT PM 35.5 = 0° 55' 02"

TO OBTAIN A GROUND DISTANCE, DIVIDE THE GRID DISTANCE BY THE GRID FACTOR.  
COMBINED GRID FACTOR = 0.99956071

### LEGEND

- T-BAR AND CAP
- ⊙ CALIF. DIV. OF HIGHWAYS BRASS CAP
- ▼ CALTRANS ALUMINUM CAP ON 3/4 INCH REBAR
- ◆ LAND NET CORNER AS NOTED
- TYPE "C" 6 INCH SQ. CONCRETE R/W MONUMENT
- RIGHT-OF-WAY LINES, STATE ROUTE MNO 395

R/W AT  
109.95 LT 94\*63.47  
N 2104228.017  
E 6995199.809

R/W AT  
191.80 RT 94\*98.28  
N 2104451.641  
E 6995405.372

FD. 1.5 INCH I.P.  
PER CALTRANS F.B.MNO 3058/330  
UP 0.3 FT., IN SMALL  
ROCK MOUND, FD.  
THREE BEARING TREES.  
PER CORNER RECORD FILED  
12/18/85 DOCUMENT NO. 2527-16-5  
SET CALTRANS TAG  
ACCEPTED AS SECTION CORNER  
N 2104935.703  
E 6997016.266