

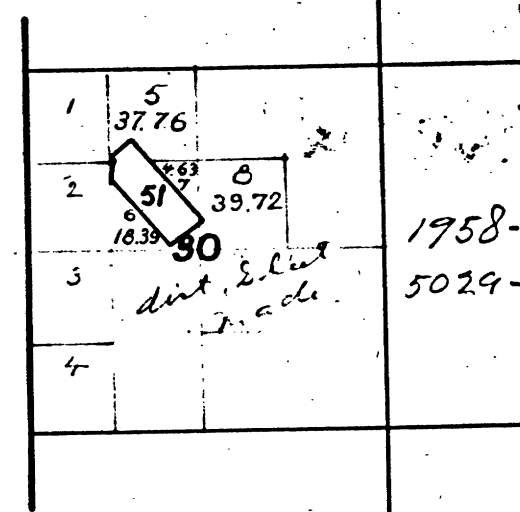
Township N°4 North,

Range N°14 East,

Mount Diablo Meridian.

E.H.H.
J.H.H.

T.4N. R.14E. M.D.M.



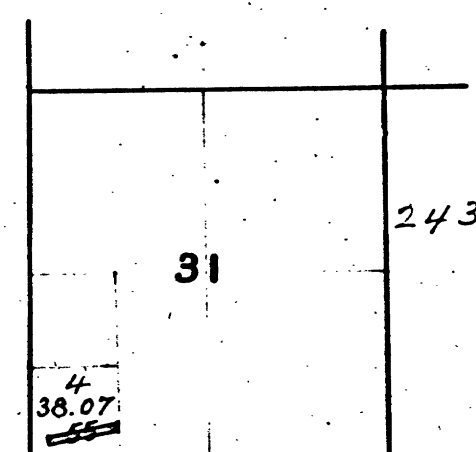
1958-51. Sonoma Quartz Mine. V61-17
5029- Bighorn etc. Lodes. V-169-14

The above diagram of Section 30, Township 4 North, Range 14 East, Mount Diablo Meridian, is correctly copied from the original map as amended and on file in this Office.

U.S. Surveyor General's Office.
San Francisco California.
July 27th, 1882.

Thos Wagner
U.S. Surv. Genl. Cal.

T.4N. R.14E. M.D.M.



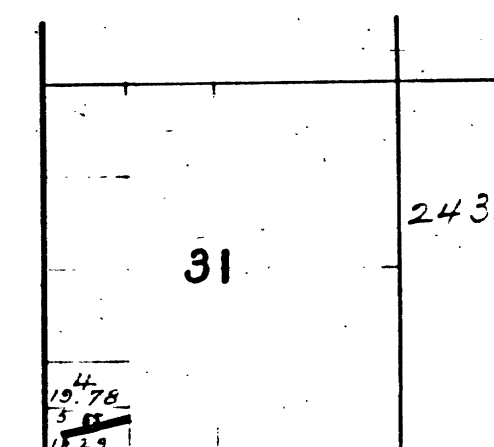
2433-55. New Calaveras Cave Quartz Mine. V 77-12

The above diagram showing amendments to Section N°31, Township N°4 North, Range N°14 East, Mount Diablo Meridian, is correctly copied from the original map as amended and on file in this Office.

U.S. Surveyor General's Office.
San Francisco, California.
June 11th, 1886.

R.B. Hammond Jr.
U.S. Surv. Gen. Cal.

T.14N. R.14E. M.D.M.



2433-55. New Calaveras Cave Quartz Mine. V77-12

The above diagram showing amendments to Section N°31, Township N°4 North, Range N°14 East, Mount Diablo Meridian, is correctly copied from the original map as amended and on file in this Office.

U.S. Surveyor General's Office.
San Francisco, California.
July 30th, 1886.

R.B. Hammond Jr.
U. S. Surv. Genl. Cal.

DEPARTMENT OF THE INTERIOR
GENERAL LAND OFFICE
Washington, D. C. Feb. 5, 1888.

I hereby certify that this is a true copy of the plat of local survey of the lands to which it relates, on file in this office.

H. H. H.
Surveyor General Land Office.

T.4N. R.14E. M.D.M.

41 357

8

BLM 203

