

## COUNTY SURVEYOR'S STATEMENT:

THIS MAP HAS BEEN EXAMINED IN ACCORDANCE WITH SECTION 8766, OF THE PROFESSIONAL LAND SURVEYOR'S ACT THIS 14 DAY OF March 2018.

TRACY PARK, PLS 8176 - COUNTY SURVEYOR

*Steven M. Mendenhall*  
BY DEPUTY COUNTY SURVEYOR



## RECORDER'S STATEMENT:

FILED THIS 23 DAY OF MARCH 2018 IN BOOK 2018 OF MAPS AT PAGE(S) 49, AT THE REQUEST OF THE COUNTY SURVEYOR. AT 8:00 AM

Serial No. 2018-0010320 Fee \$ 86.00

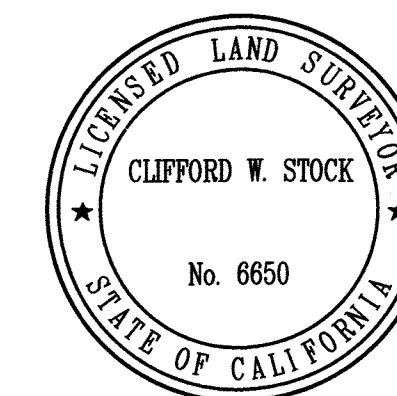
*Richard N. Benson*  
COUNTY RECORDER

*a. r. sheto*  
BY DEPUTY

## SURVEYOR'S STATEMENT:

THIS MAP CORRECTLY REPRESENTS A SURVEY MADE BY ME OR UNDER MY DIRECTION IN CONFORMANCE WITH THE THE REQUIREMENTS OF THE PROFESSIONAL LAND SURVEYORS ACT AT THE REQUEST OF THE PARKWAY PROPERTIES LLC IN AUGUST 2016.

*Clifford W. Stock* 3/6/2018  
CLIFFORD W. STOCK DATE  
LS 6650



## LEGEND

- FOUND MONUMENT - SEE MONUMENT NOTES
- ▲ SET NAIL & TAG LS 6650
- SET 3/4" REBAR WITH PLASTIC CAP LS 6650
- SET 3/4" IRON PIPE AND PLUG LS 6650
- [M1] MONUMENT IDENTIFIER

- IP . . . IRON PIPE ( ) RECORD
- OS . . . OFFSET (R1) REFERENCE NUMBER
- TC . . . TOP OF CURB NTS NOT TO SCALE
- M.C.R. MARIN COUNTY RECORDS
- D.N. DOCUMENT NUMBER
- R.M. RECORD MAP

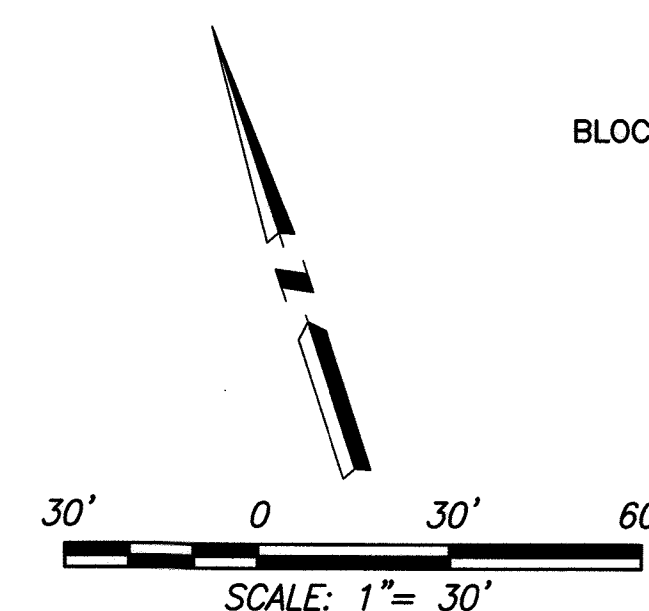
## GENERAL NOTES

- ALL DISTANCES ARE IN GROUND U.S. SURVEY FEET AND DECIMALS THEREOF.
- THIS RECORD OF SURVEY IS BEING FILED IN COMPLIANCE WITH SECTION 8762, PARAGRAPHS a, b.1, b.2, b.3, b.4, & b.5 ACT (8764 PLSA).

## RECORD OF SURVEY

LANDS OF GWL LIVING TRUST  
BEING LOT 4 AND PORTIONS OF LOT 1, LOT 5 & LOT 6  
BLOCK 7, "AMENDED MAP OF SEQUOIA PARK SECTION NO. 1" 4 R.M. 31  
D.N.2006-021874, D.N.2012-070446,  
D.N.2008-031639 & D.N. 2011-029971 M.C.R  
SAN ANSELMO, COUNTY OF MARIN, STATE OF CALIFORNIA  
MARCH 2018

**OBERKAMPER & ASSOCIATES**  
**CIVIL ENGINEERS INC.**  
7200 REDWOOD BLVD SUITE 308 NOVATO, CA 94945  
PHONE (415) 897-2800



## REFERENCES

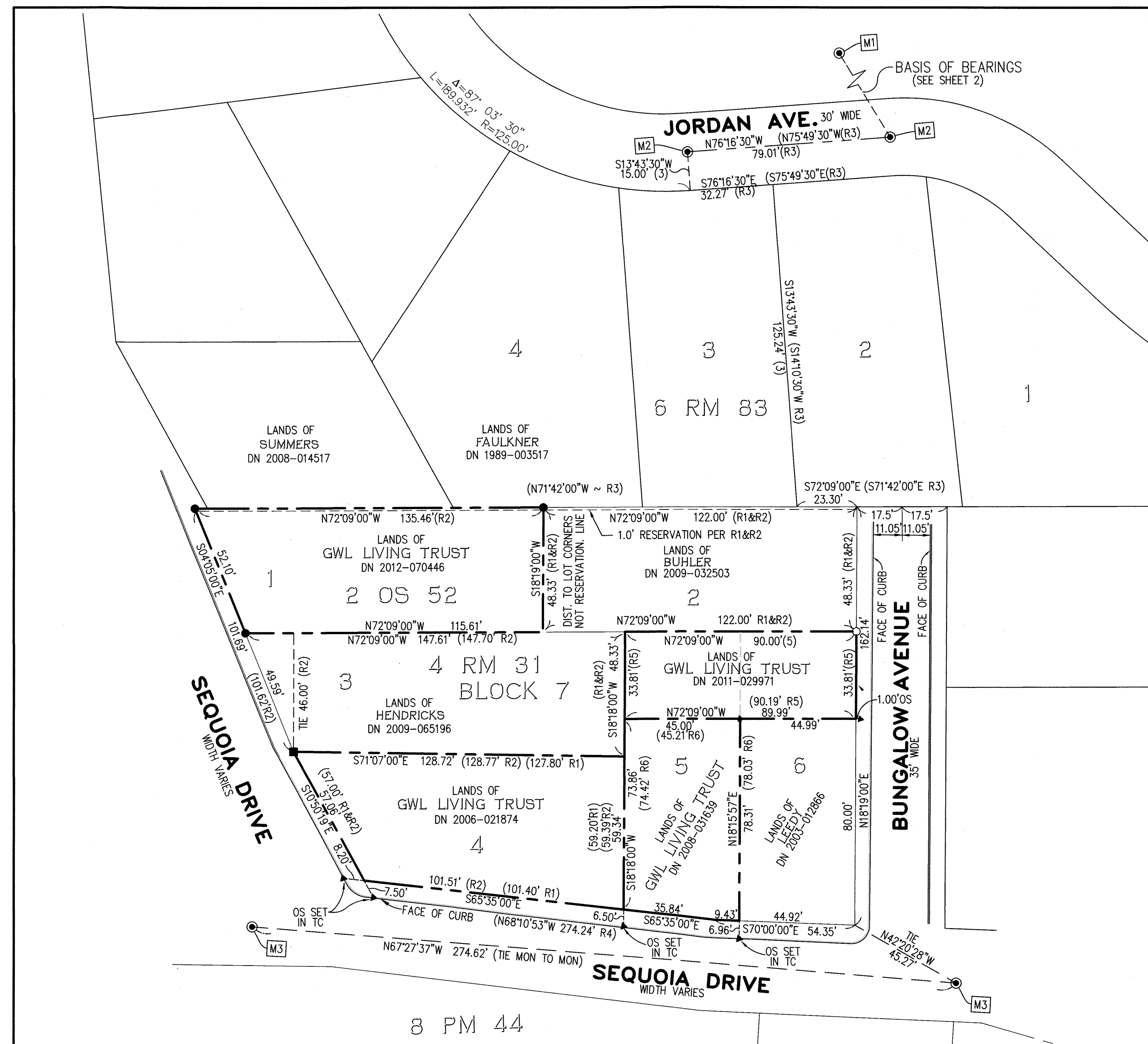
- R1 - 4 RM 31
- R2 - 2 OS 52
- R3 - 6 RM 83
- R4 - 8 PM 44
- R5 - 2011-029971
- R6 - 2008-031639

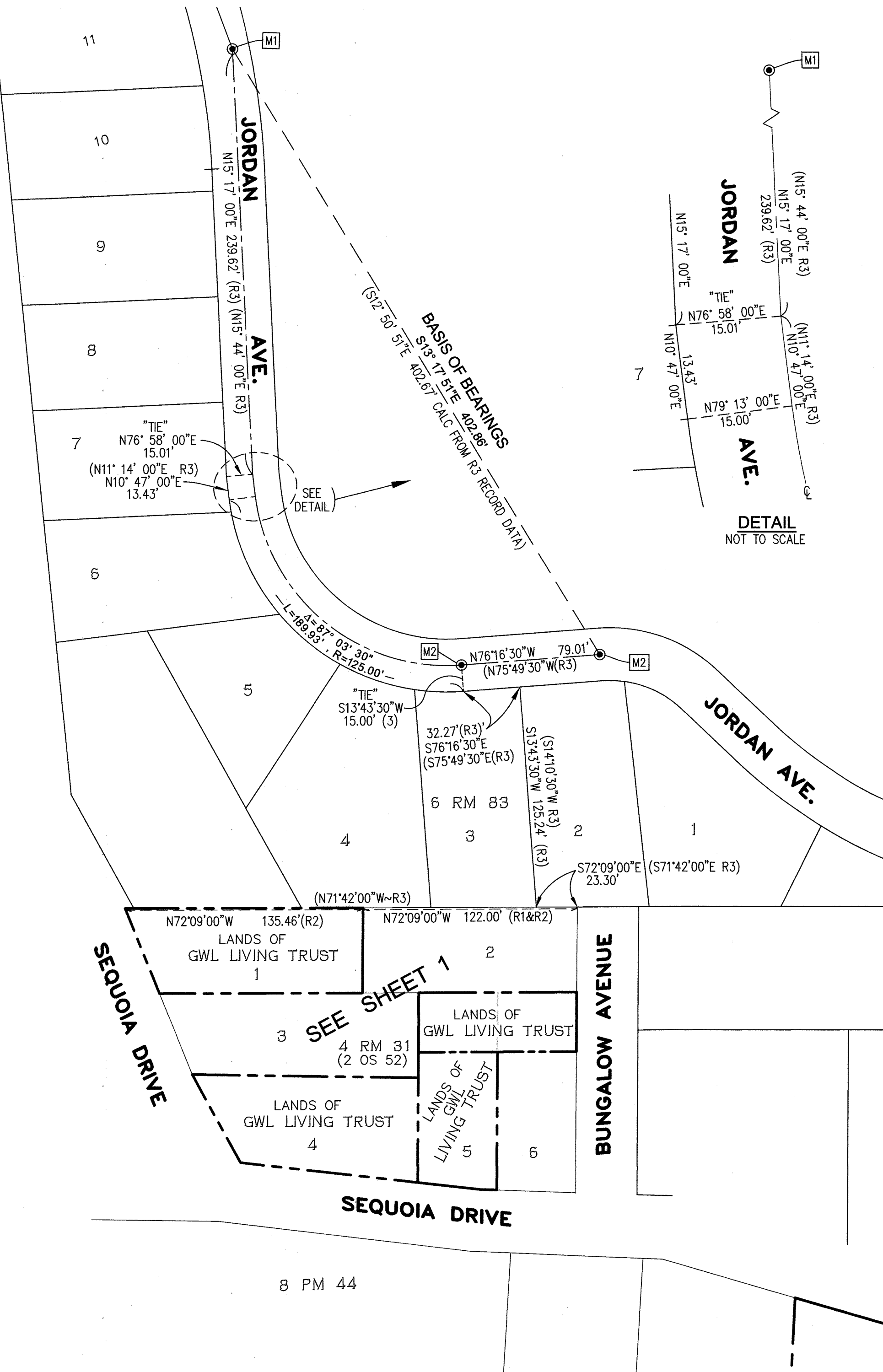
## MONUMENT NOTES

- M1 - FOUND 1" BOLT NO TAG 0.3' BELOW PAVEMENT ACCEPTED AS MONUMENT SHOWN ON R3
- M2 - FOUND 1" IRON PIPE WITH TAG RCE 3230 0.2' BELOW PAVEMENT ACCEPTED AS MONUMENT SHOWN PER R3
- M3 - FOUND ROD IN STANDARD CITY MONUMENT WELL PER R4

## BASIS OF BEARINGS

THE BASIS OF BEARINGS OF THIS SURVEY IS N13°17'51"W CALCULATED BETWEEN FOUND STREET CENTER LINE MONUMENTS SHOWN ON "MAP OF HILDALE PARK UNIT TWO" FILED IN BOOK 6 OF RECORD MAPS AT PAGE 83, MARIN COUNTY RECORDS. THE CALCULATED BEARING WAS ROTATED COUNTERCLOCKWISE 0°27'00" TO MATCH THE BEARING SHOWN ON THE COMMON LINE BETWEEN 4 RM 31 AND 6 RM 83. SEE SHEET 2 OF 2





# BASIS OF BEARINGS

THE BASIS OF BEARINGS OF THIS SURVEY IS N13°17'51"W CALCULATED BETWEEN FOUND STREET CENTERLINE MONUMENTS SHOWN ON "MAP OF HILDALE PARK UNIT TWO" FILED IN BOOK 6 OF RECORD MAPS AT PAGE 83, MARIN COUNTY RECORDS. THE CALCULATED BEARING WAS ROTATED COUNTERCLOCKWISE 0°27'00" TO MATCH THE BEARING SHOWN ON THE COMMON LINE BETWEEN 4 RM 31 AND 6 RM 83.

## MONUMENT NOTES

- M1 - FOUND 1" BOLT NO TAG 0.3' BELOW PAVEMENT ACCEPTED AS MONUMENT SHOWN ON R3
- M2 - FOUND 1" IRON PIPE WITH TAG RCE 3230 0.2' BELOW PAVEMENT ACCEPTED AS MONUMENT SHOWN ON R3
- M3 - FOUND ROD IN STANDARD CITY MONUMENT WELL PER R4

## NOTES

ALL DISTANCES ARE IN GROUND U.S. FEET AND DECIMALS THEREOF.

## REFERENCES

- R1 - 4 RM 31
- R2 - 2 OS 52
- R3 - 6 RM 83
- R4 - 8 PM 44

## LEGEND

- FOUND MONUMENT - SEE MONUMENT NOTES
- [M1] MONUMENT IDENTIFIER
- ( ) RECORD
- (R1) REFERENCE NUMBER
- NTS NOT TO SCALE
- M.C.R. MARIN COUNTY RECORDS
- D.N. DOCUMENT NUMBER
- R.M. RECORD MAP

## RECORD OF SURVEY

LANDS OF GWL LIVING TRUST  
BEING LOT 4 AND PORTIONS OF LOT 1, LOT 5 & LOT 6  
BLOCK 7, "AMENDED MAP OF SEQUOIA PARK SECTION NO. 1" 4 R.M. 31  
D.N.2006-021874, D.N.2012-070446,  
D.N.2008-031639 & D.N 2011-029971 M.C.R  
SAN ANSELMO, COUNTY OF MARIN, STATE OF CALIFORNIA  
MARCH 2018

## OBERKAMPER & ASSOCIATES CIVIL ENGINEERS INC.

7200 REDWOOD BLVD SUITE 308 NOVATO, CA 94945  
PHONE (415) 897-2800