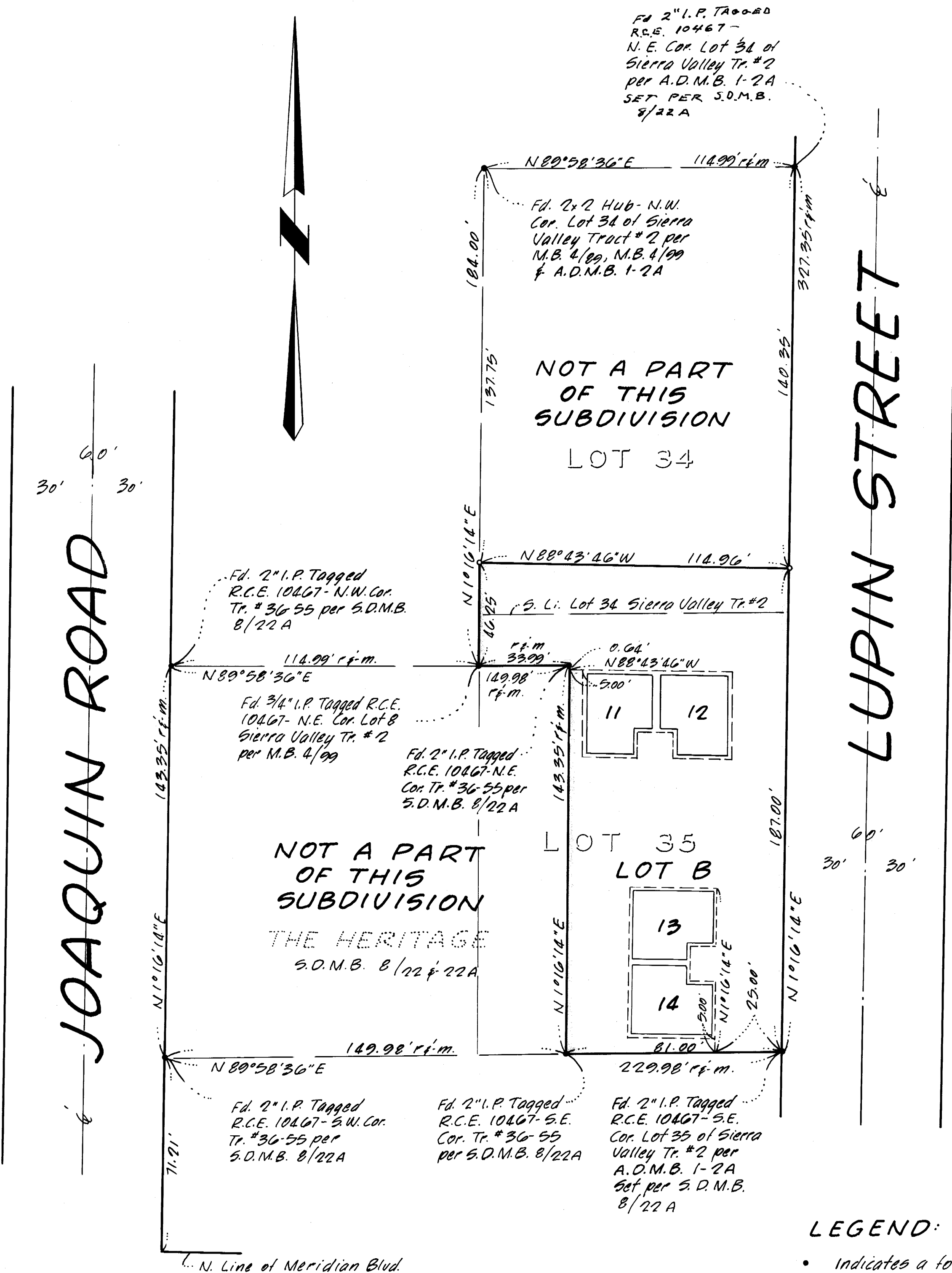


# THE HERITAGE UNIT 2 TRACT N° 36-55A

IN THE UNINCORPORATED TERRITORY OF  
THE COUNTY OF MONO, STATE OF CALIFORNIA,  
BEING A SUBDIVISION OF A PORTION OF  
LOT 34 AND LOT 35 OF SIERRA VALLEY  
TRACT N° 2 AS SHOWN ON THE MAP THEREOF  
RECORDED IN BOOK 1, PAGES 2 AND 2 A OF  
MAPS OF ASSESSMENT DISTRICTS, RECORDS  
OF MONO COUNTY, IN THE SOUTHWEST  
QUARTER OF SECTION 34, T.35, R.27E, M.D.M.

CONDOMINIUM PURPOSES



## LEGEND:

- Indicates a found point as noted.
- Indicates a 2" I.P. Tag set

## BASIS OF BEARINGS:

The record bearing of N 10° 16' 14" E of the  
west line of Lots 34 and 35 of Sierra Valley  
Tract N° 2 as shown on the map thereof  
recorded in Book 1, Pages 2 and 2 A of Maps  
of Assessment Districts was used as the  
basis of bearings shown on this map.

Record data shown on this map is  
from the map of Sierra Valley  
Tract N° 2 recorded in Book 1,  
Pages 2 and 2-A of Maps of  
Assessment Districts and the map  
of The Heritage, Tract N° 36-55  
recorded in Book 8, Page 22 A of  
Subdivision Maps.

Vol. 8, Pg. 31-A