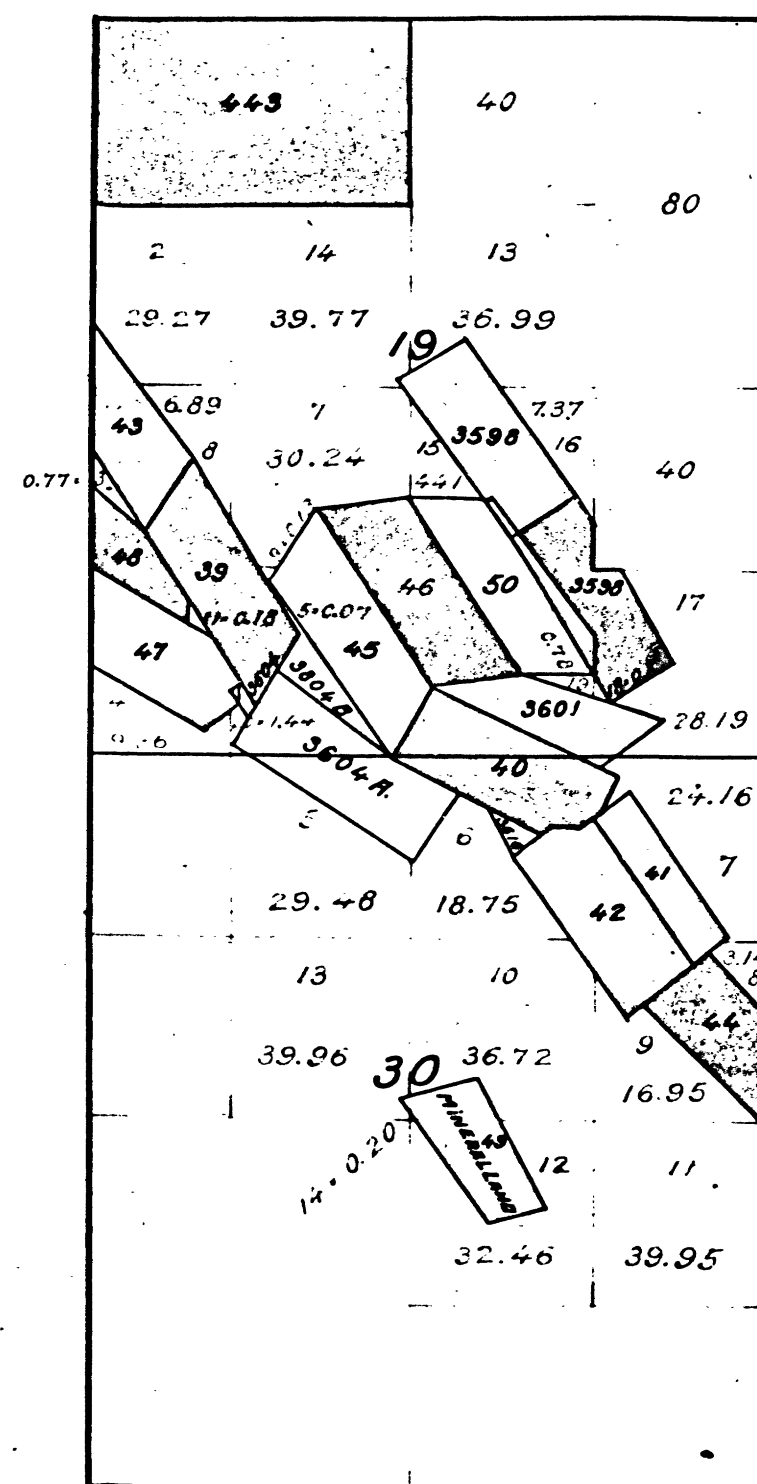


T. 2 N.-R. 12 E. - M. D. M., California.



A. G.

- |       |    |   |
|-------|----|---|
| 2891  | 39 | Pine Log N°2 Quartz Mine  |
| 2892  | 40 | Royal   |
| 2900  | 43 | Pine Log  |
| 2907  | 45 | Mauritius   |
| 3100  | 46 | Hill Top  |
| 3185  | 47 | Bulger and Last Chance Con. Quartz Mine. Bulger Location                |
|       | 48 | Last Chance   |
| 3537  | 50 | Undeveloped Quartz Mine   |
| 443   |    | Mineral Entry Blue Mountain Placer (Letter of Stockton L.O. Dec. 1 '95) |
| 2893  | 41 | Ant Hill Quartz Mine  |
| 2894  | 42 | Good Enough   |
| 2901  | 44 | Emma  |
| 3400  | 49 | Empire  |
| 3598  |    | Morning Star Lode   |
|       |    | Dublin  |
| 3601  |    | Julia Quartz Mine   |
| 3609  |    | William R. Lode   |
| 3604A |    | M. King   |
| 3604B |    | Mill Site   |
| 3616  |    | Royal Mine Extension Quartz Mine  |

The above diagram of Secs. 19 and 30, Township N°2 North, Range N°12 East, Mount Diablo Meridian, California, is correctly constructed from official plats on file in this office.  
U.S. Surveyor General's Office.  
San Francisco, California  
April 25<sup>th</sup> 1901.

*J. M. Gleaves.*  
U.S. Surv. Gen. Cal.

DEPARTMENT OF THE INTERIOR,  
GENERAL LAND OFFICE,  
Washington, D. C. *10* *1901*.  
I hereby certify that this is a true copy  
of the plat of official survey of the lands  
to which it relates, on file in this office.

*W. H. ...*  
Recorder, General Land Office.

CHAINS

CHAINS  
10 20 40 60 80 120

41 110

T 2 N R 12 E M L

BLM 26