

CORNER RECORD

Agency Index

BK 131 PG 91

Document Number

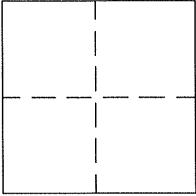
CR 14053

City of Berkeley

County of Alameda

California

Brief Legal Description B2215 City Monument westerly of APN 55-1853-16, Panoramic Wy. (B2164 & B2165)



CORNER TYPE

Government Corner ☐ Control ☒
Meander ☐ Property ☐
Rancho ☐ Other ☐

Date of Survey 10/17/2019

COORDINATES (Optional)

N: _____ E: _____

Elevation: 111.41' (B2215)

Units: Metric ☐ U.S. Survey Foot ☒

Horizontal Datum _____

Zone _____ Epoch Date _____

Vertical Datum ASSUMED

☐ Complies with Public Resources Code §§ 8801-8819☐ Complies with Public Resources Code §§ 8890-8902PLS Act Ref: ☐ 8765(d)☒ 8771☐ 8773☐ Other:Corner/
Monument: ☐ Left as found☒ Established☐ Rebuilt☐ Pre-Construction☒ Found and tagged ☐ Reestablished☒ Referenced☒ Post-Construction

Narrative of corner identified and monument as found, set, reset, replaced, or removed:

☒ See sheet #2 for description(s): B2215-FOUND(1) 2" BRASS CAP STAMPED "CITY OF BERKELEY" IN MONUMENT WELL. SET PUNCH MARK IN FOUND BRASS CAP PER CORNER RECORD 12850. B2164 & B2165-SET(2) 1-1/4" BRASS DISK STAMPED "PLS 6392" IN PLACE OF FOUND SCRIBED X, IN CURB PER RECORD RECORD 12850. REFERENCE TIES WERE FOUND, SET & MEASURED TO PERPETUATE EXISTING MONUMENT PURSUANT TO THE PLS ACT SECTION 8771 AFTER CONSTRUCTION. NO CLAIM IS MADE REGARDING THE CORRECTNESS OF THE POSITIONS OF SAID MONUMENTS, NOR THE DIMENSIONAL RELATIONSHIP TO STREET CENTERLINES OR PROPERTY BOUNDARIES. ALL LINE & CURVE DATA SHOWN IS MEASURED UNLESS OTHERWISE NOTED.

SURVEYOR'S STATEMENT

This Corner Record was prepared by me or under my direction in conformance with

the Professional Land Surveyors' Act on November 18th, 2019.

Signed Mark E. Reinhardt P.L.S. No. 6392

COUNTY SURVEYOR'S STATEMENT

MAR 24 2020

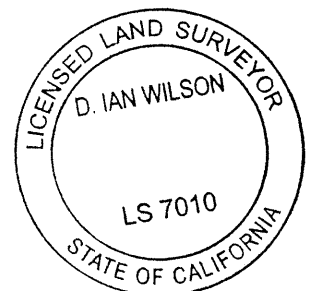
This Corner Record was received _____,

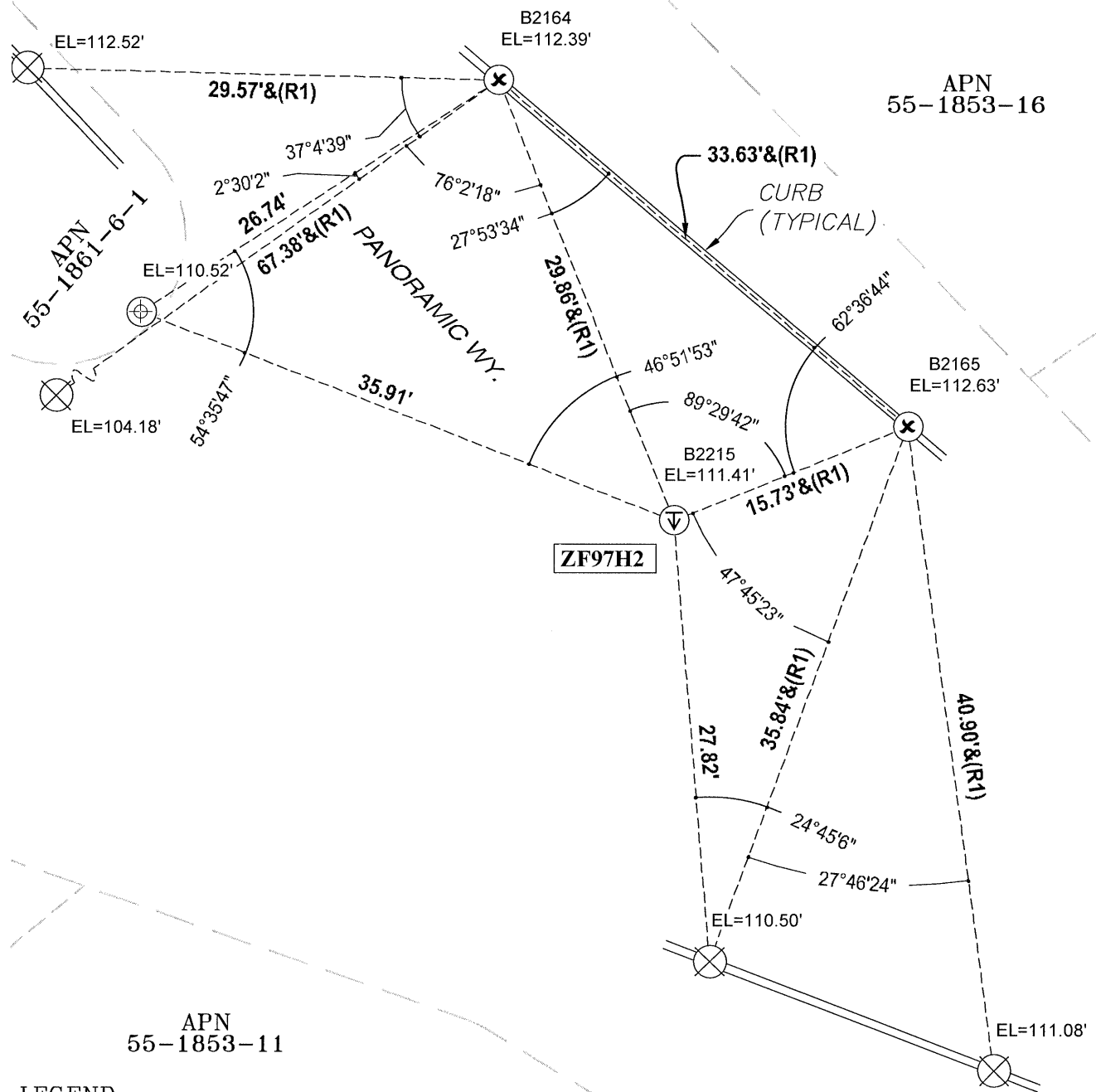
and examined and filed MAR 24 2020.

Signed D. Ian Wilson P.L.S. or P.E. No. 7010

Title ALAMEDA COUNTY SURVEYOR

County Surveyor's Comment





APN
55-1853-11

LEGEND

MONUMENT FOUND

⊕ (B2215) 2" BRASS CAP STAMPED "CITY OF BERKELEY" IN MONUMENT WELL

MONUMENT SET

⊗ (B2164 & B2165) 1-1/4" BRASS DISK MARKED "PLS 6392" IN CURB

REFERENCE TIE FOUND

⊗ 1-1/4" BRASS DISK MARKED "PLS 6392" IN CURB per (R1)

REFERENCE TIE SET

⊕ 1-1/4" BRASS DISK MARKED "PLS 6392" IN CURB

REFERENCE

(R1) Corner Record 12850

AA##A# - ALAMEDA COUNTY MONUMENT ID

NOTES

Elevations on reference points were established using a Sokkia B20 Automatic 32X level.

All line & curve data shown is measured unless otherwise noted.

