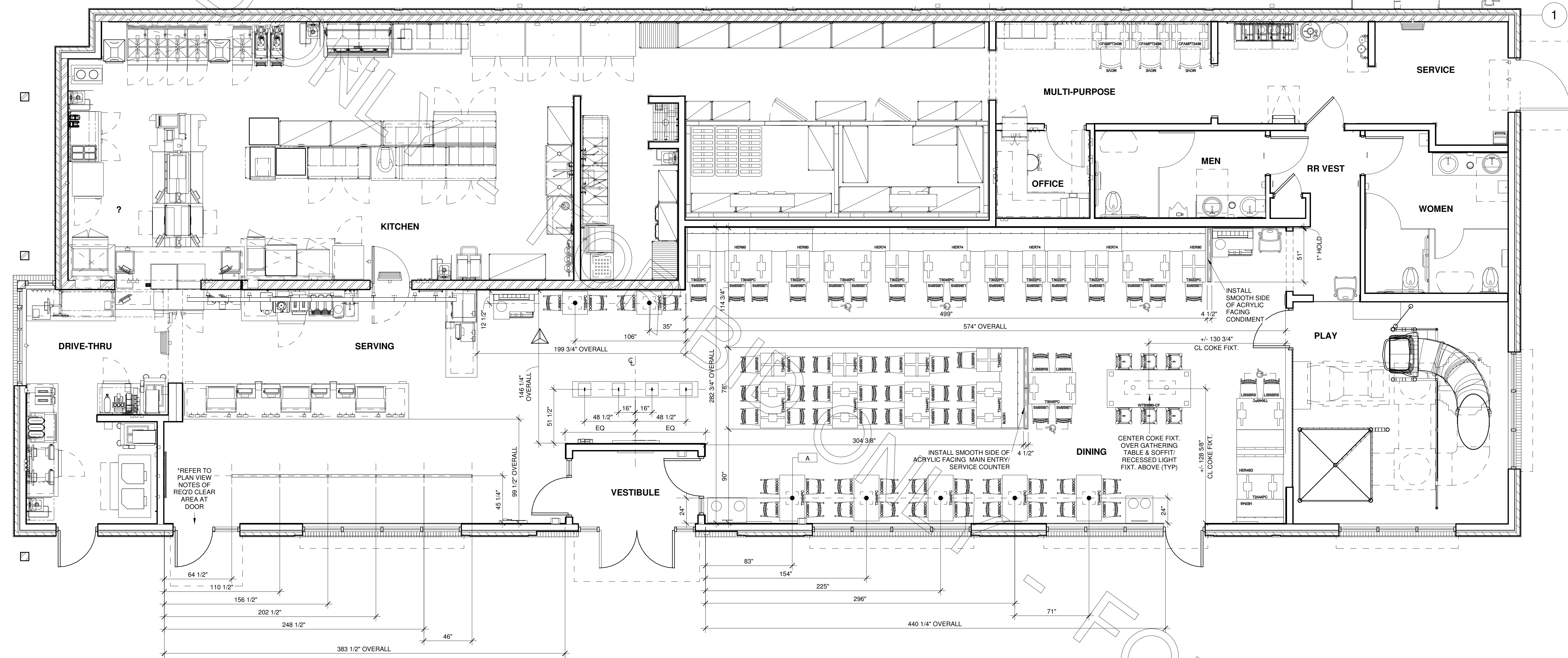


WALL KEY	STEEL LOW WALL, BY CHI 4.5" BASE PLATE	STEEL FULL HEIGHT WALL, BY CHI 2.5" DEPTH	STREAMLINE, QUEUE, BY CHI 2.5" RAIL DEPTH	STREAMLINE, QUEUE, BY CHI 2.5" RAIL + PLATES	DEMO WALLS/ KNEEWALLS/ MISC. BY G.C.	REFER TO ARCHITECTURAL PLAN FOR INTERIOR GC BUILT PARTITION TYPES/ DETAILS. WALL KEY REFERS TO CHI MANUF. PRODUCT ONLY.
	"BOLT DOWN"	"BOLT DOWN"	"CORED"	"BOLT DOWN"		

STEEL KEY	GENERIC CORE	12"x12" PLATE	12"x12" PLATE (OFFSET)	CANTILEVER PLATE	GENERIC BOLT DOWN	12"x12" PLATE	12"x12" PLATE (OFFSET)	X-BASE	BI-POD
NOTE: THIS KEY REPRESENTS GENERAL STEEL SYMBOLS. REFERENCE PROJECT FOR PRODUCT SPECIFICATIONS/ STEEL TYPES.									



C1 CORE DRILL PLAN -LRG
1/4" = 1'-0"

STD. HEIGHT BI-POD FREESTANDING 4'-TOP

STD. HEIGHT X-BASE FREESTANDING 6'-TOP

STD. HEIGHT BI-POD FREESTANDING ADA

STD. HEIGHT BI-POD FREESTANDING ADA

NO ADA SYMBOL T2464F 4'-TOP

NO ADA SYMBOL T2466F 6'-TOP

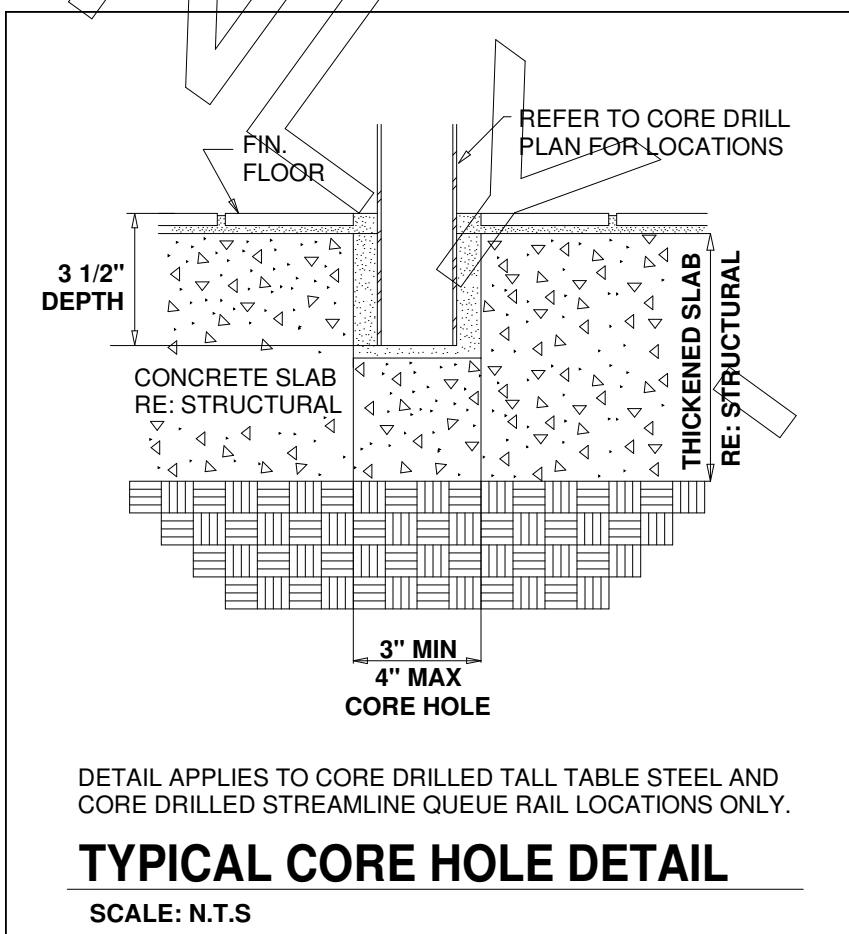
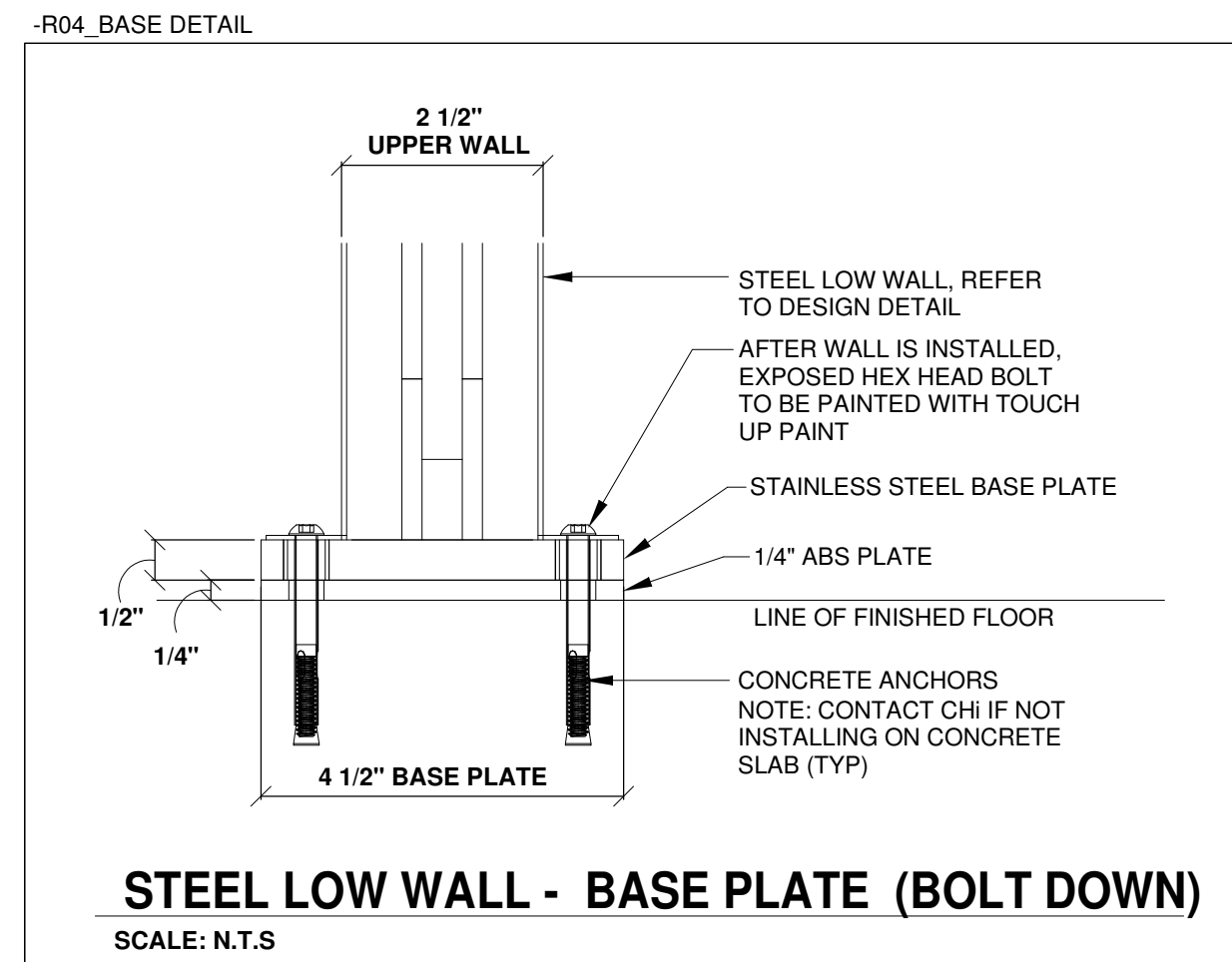
TABLE STEEL

BAR HEIGHT 12" PLATE

STEEL HEIGHT: 44.5" SET HEIGHT: 41"

TSRBBW

A | TABLE STEEL QTY: 7



Chick-fil-A
5200 Buffington Road
Atlanta, Georgia 30349-2998

Charter House Holdings, LLC
200 N. Franklin Street
Zeeland, MI 49464
www.gotoCHI.com
616.399.6000

This drawing contains proprietary information by CHI. Unauthorized use or reproduction is prohibited without expressed written consent of CHI.

CHICK-FIL-A

Cherokee Place FSR

115 Cherokee Place, Cartersville, GA 30121

FSR# 00534

NO.	DATE	DESCRIPTION
1	12/21/17	ISSUED FOR PERMIT
2	03/08/18	ISSUED FOR BID

REVISION SCHEDULE

NO.	DATE	DESCRIPTION
1	12/21/17	ISSUED FOR PERMIT
2	03/08/18	ISSUED FOR BID

CURRENT DESIGN
NOTE APPLIED
ARCHITECT'S PROJECT #

PRINTED FOR BID SET
DATE 03/08/18
DRAWN BY JS / LB

Information contained on this drawing and in all digital files produced for above named project may not be reproduced in any manner without express written or verbal consent from authorized project representatives.

SHEET FURNITURE CORE DRILL PLAN

SHEET NUMBER

F-211