

CORNER RECORD

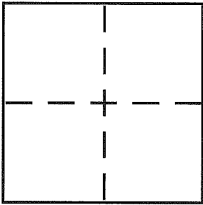
BK 26 Pg 81

Document Number CR 3090

City of BERKELEY

County of ALAMEDA, California

Brief Legal Description MONUMENT REFERENCE - DANA ST / PRINCE ST (B006B)



CORNER TYPE

Government Corner ☐ Control ☐
Meander ☐ Property ☐
Rancho ☐ Other ☒
Date of Survey 7-31-07

COORDINATES (Optional)

N. _____
E. _____
Zone _____ NAD27 ☐ NAD83 ☐
NAD83 Epoch _____
Elev. _____
Vert. Datum: NGVD29 ☐ NAVD88 ☐
Meas. Units: Metric ☐ Imperial ☐

Corner - Left as found ☒ Found and tagged ☐ Established ☐ Reestablished ☐ Rebuilt ☐

Identification and type of corner found: Evidence used to identify or procedure used to establish or reestablish the corner:

SEE PAGE 2

A description of the physical condition of the monument as found and as set or reset:

SEE PAGE 2

SURVEYOR'S STATEMENT

This Corner Record was prepared by me or under my direction in conformance with the Land Surveyor's Act on JULY 31, 2007

Signed [Signature] P.L.S or R.C.E. No. PLS 5003

COUNTY SURVEYOR'S STATEMENT

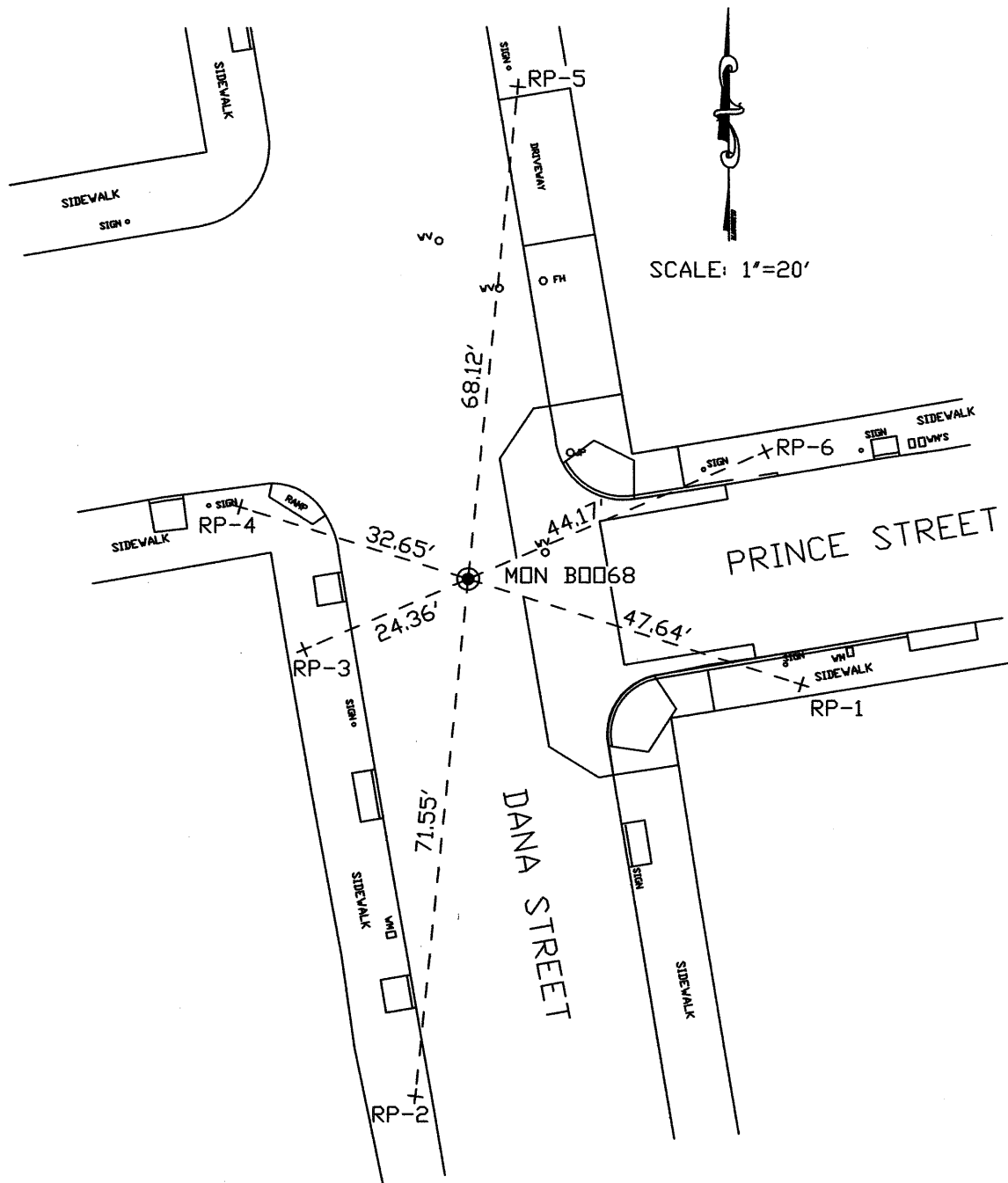
This Corner Record was received 8-10-07
and examined and filed 8-22-07

Signed [Signature] P.L.S or R.C.E. No. _____

Title COUNTY SURVEYOR

County Surveyor's Comment _____





THE EXISTING MONUMENT AS SHOWN IS REFERENCED BY STRAIGHT LINES BETWEEN RP-1 TO RP-4, RP-2 TO RP-5 AND RP-3 TO RP-6.

LEGEND

- EXISTING STANDARD CITY MONUMENT WITH 1" POST
- + CUT CROSS IN SIDEWALK
- RP REFERENCE POINT