

# TRACT Nº 36-73 MAMMOTH CREEK

IN UNINCORPORATED TERRITORY OF MONO COUNTY, CALIFORNIA.

JUNE 1975

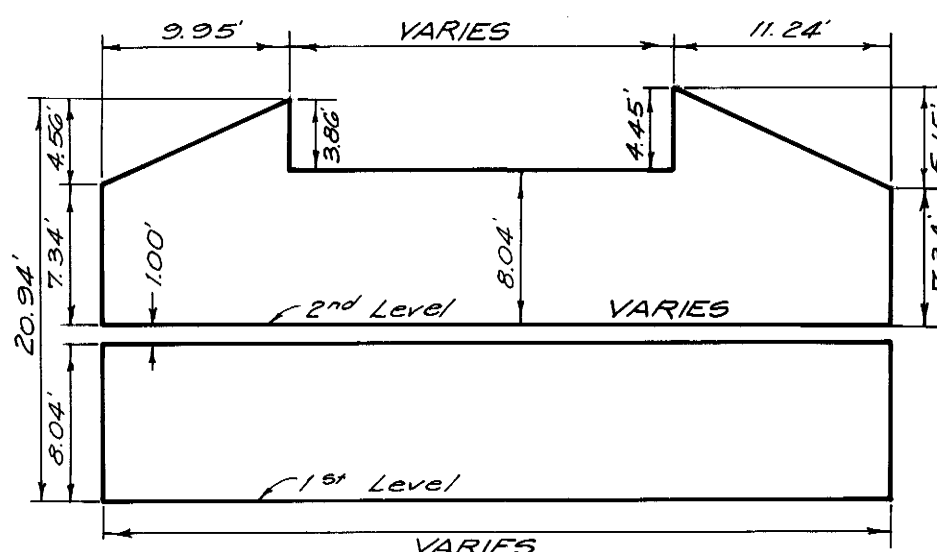
5.373 ACRES

GERALD F. OLDENBURG, L.S. 3246

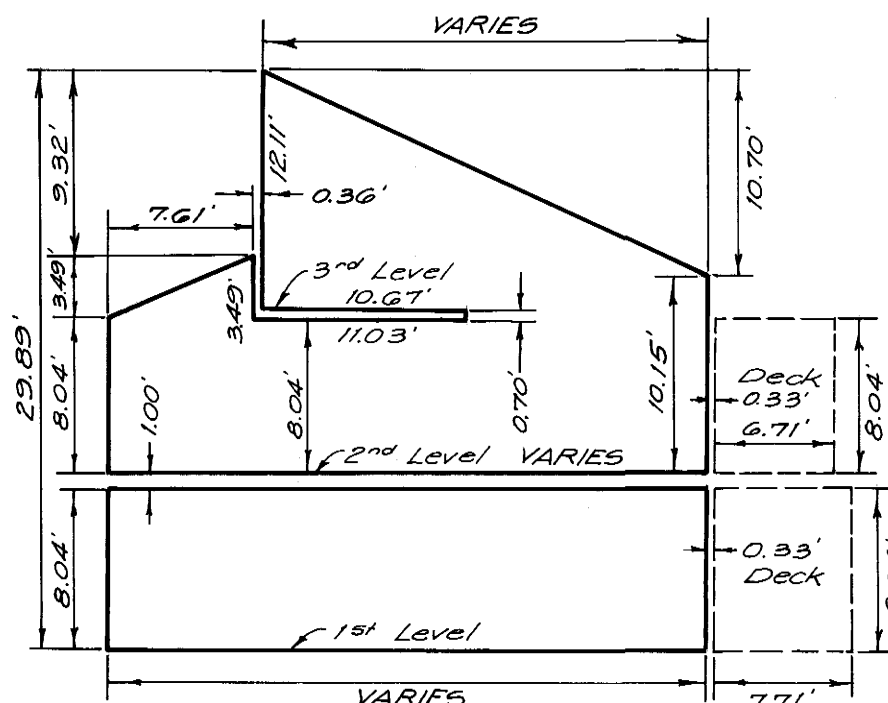
WILLIAMSON & SCHMID, CIVIL ENGINEERS

FOR CONDOMINIUM PURPOSES

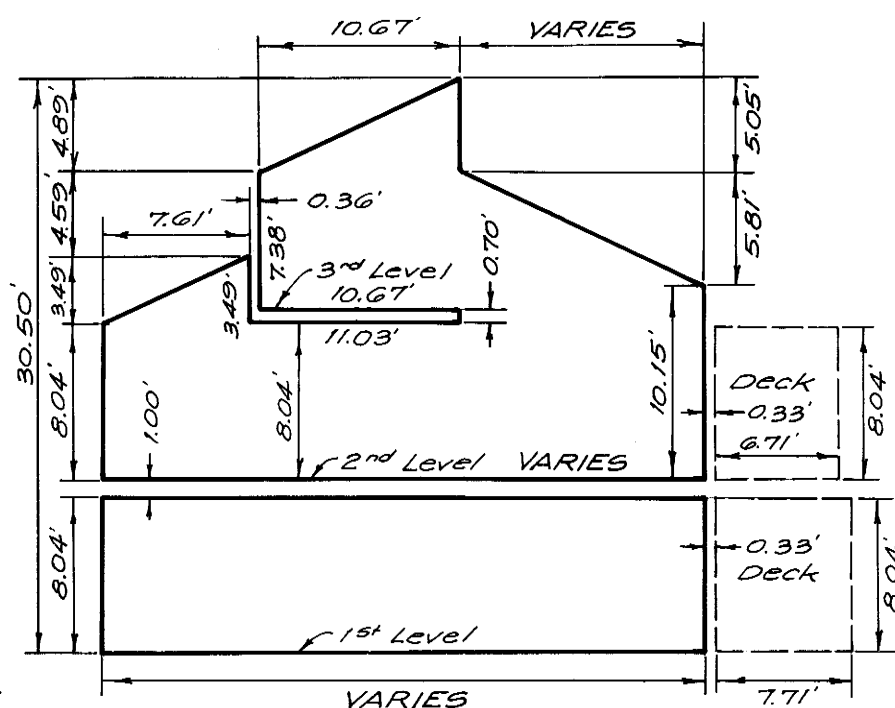
1 LOT AND 61 CONDOMINIUM UNITS



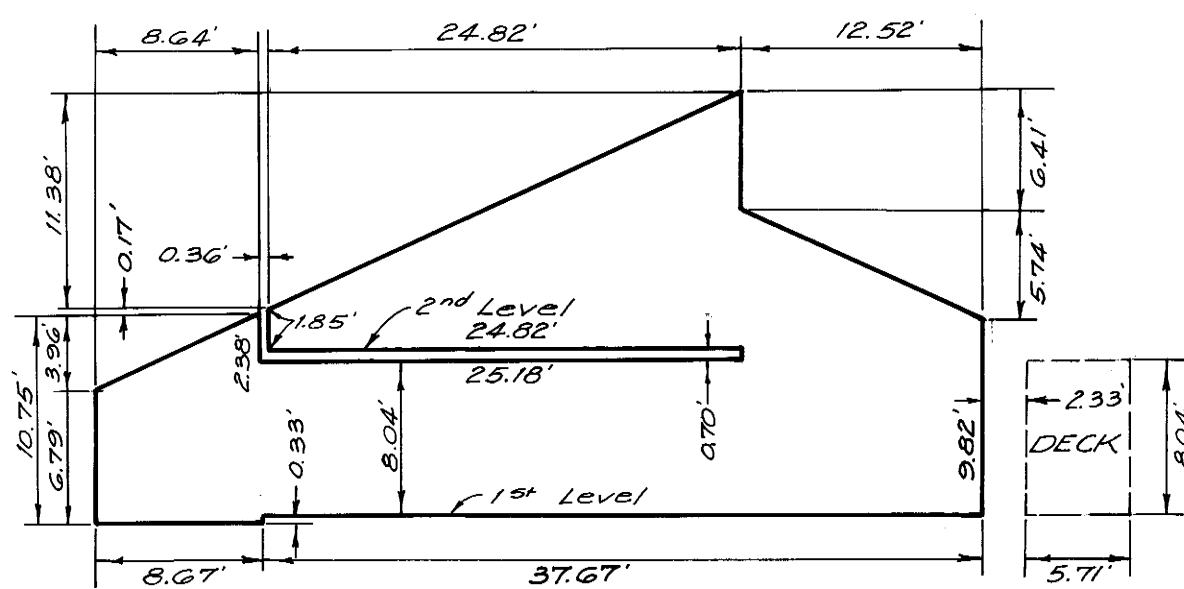
SECTION A-A  
UNITS: 31, 32, 33, 34, 39,  
40, 41, 42, 47, 48, 49,  
50, 55, 56, 57 & 58



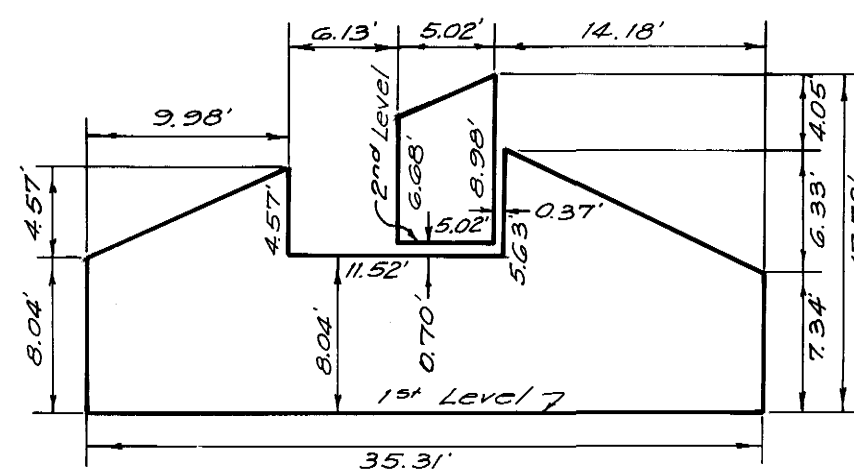
SECTION B-B  
UNITS: 31, 32, 41, 42,  
47, 48, 57 & 58



SECTION C-C  
UNITS: 33, 34, 39, 40,  
49, 50, 55 & 56



SECTION A-A  
UNIT: G1



SECTION B-B  
UNIT: G1

## NOTES:

1. See sheets 5 to 8, inclusive, for typical buildings to be erected to contain G1 Units.
2. These plans shown on sheet 9, 10 and 11 represent typical sections and vertical limits of Units.
3. See sheet 11 for general notes.