

CORNER RECORD

BK 71 PG 97

APN No. _____ (Optional) Document Number CR 7428
 City of OAKLAND County of ALAMEDA, California
 Brief Legal Description City of Oakland Street Monument

CORNER TYPE

Government Corner ☐ Control ☐
 Meander ☐ Property ☐
 Rancho ☐ Other ☒
 Date of Survey 2/25/2015

COORDINATES ** (Optional)

N. _____
 E. _____
 Zone _____ NAD27 ☐ NAD83 ☐
 NAD 83 Epoch _____
 Elev. _____

Corner - Left as found ☒ Found and tagged ☐ Established ☐ Reestablished ☐ Rebuilt ☐

In compliance with Section 8771 of the Professional Land Surveyors' Act, this corner record is being filed to ESTABLISH X / REESTABLISH _____ the position of an existing monument PRIOR X / SUBSEQUENT _____ to street or highway reconstruction.

Identification and type of corner found: Evidence used to identify or procedure used to establish or reestablish the corner:
In compliance with Section 8771 of the Professional Land Surveyors' Act, this corner record is being filed to establish the position of an existing monument prior to street or highway construction.

A description of the physical condition of the monument as found and as set or reset: _____
See page 2 - Found concrete monument w/metal pin at the intersection of International Blvd. and 77th Ave., 5' West of the C/L of 77th Ave. (Easterly). City of Oakland Monument Number 20 SW 27 R.

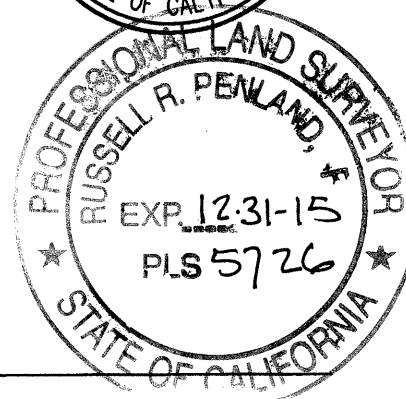
SURVEYOR'S STATEMENT

This Corner Record was prepared by me or under my direction in conformance with the Land Surveyors' Act on May 19 20 15.
 Signed Randell Scott West L.S. or R.C.E. Number 8663



COUNTY SURVEYOR'S STATEMENT

This Corner Record was received 6-25 20 15 and examined and filed 9-4 20 15.
 Signed [Signature] Title County Surveyor

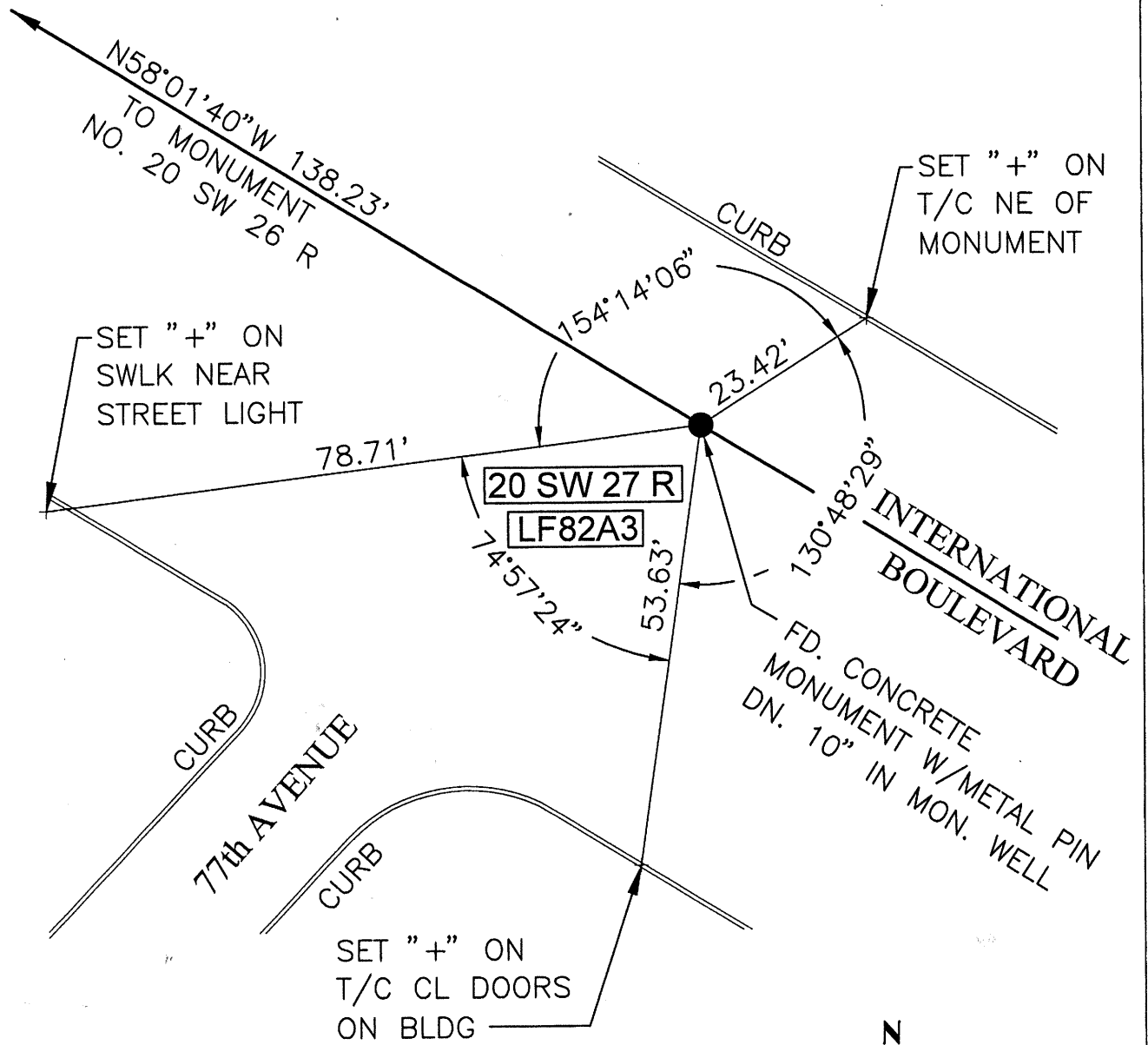


County Surveyor's Comment _____

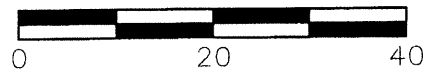
COORDINATES ** Coordinates are Navigational quality only, not for retracement.

Job Number:

Spec. No:



SCALE 1" = 20'



B. C. & F. Project No. 215-0133
McPheeters No. 115108