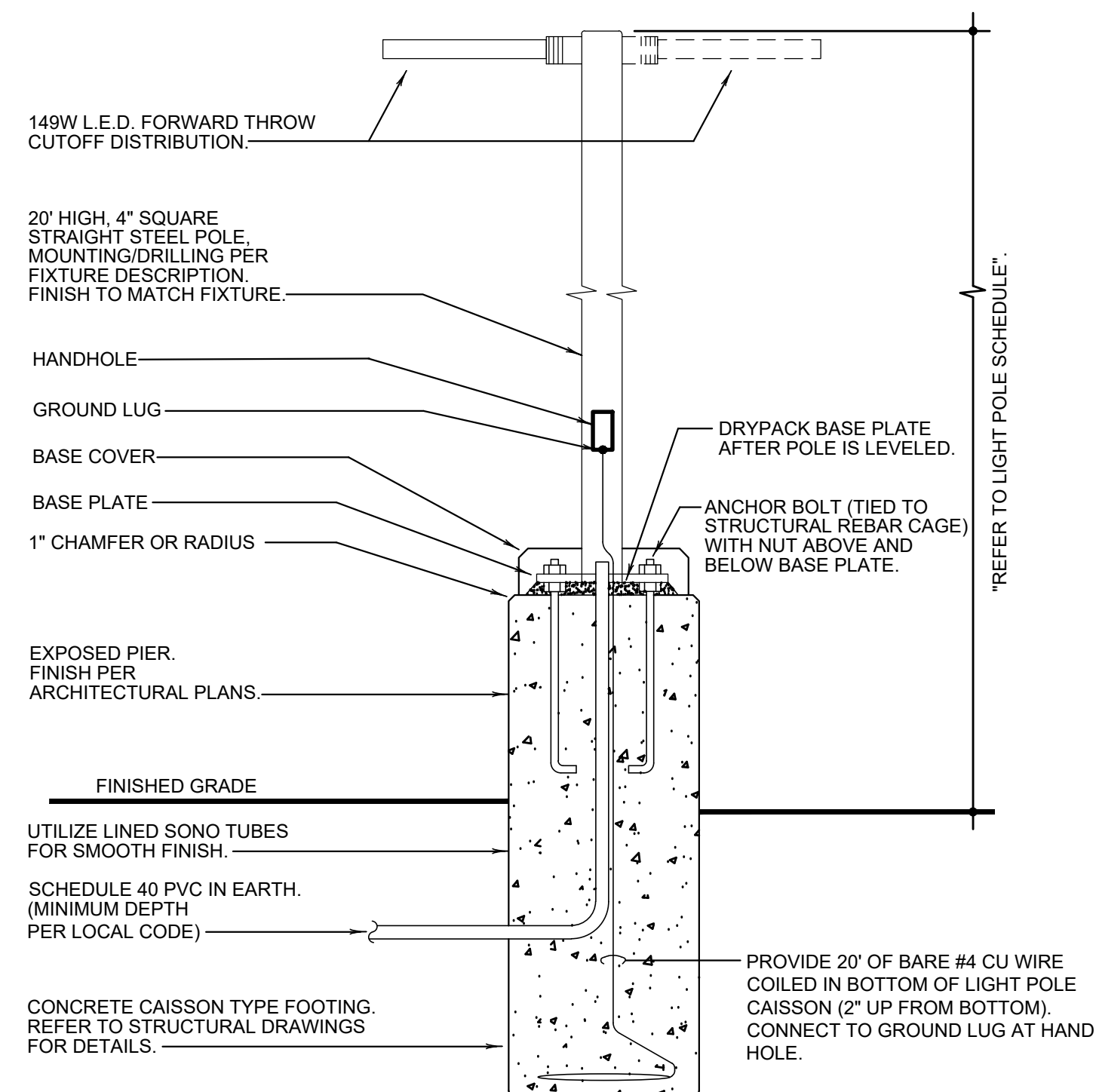


- COORDINATE SERVICE ENTRANCE EQUIPMENT, UTILITY TRANSFORMER, PRIMARY SERVICE, SECONDARY SERVICE AND POWER POLE LOCATIONS WITH SERVING UTILITY COMPANY AND COMPLY AS REQUIRED.
- CONTRACTOR TO BE RESPONSIBLE FOR COORDINATING AND PROVIDING REQUIRED WORK FOR SUPPLYING ELECTRICAL POWER AND TELEPHONE UTILITIES TO THE BUILDING.
- CONTRACTOR SHALL HAVE ALL EXISTING UNDERGROUND UTILITIES LOCATED PRIOR TO TRENCHING. ALL UNDERGROUND UTILITIES DAMAGED DURING TRENCHING SHALL BE REPAIRED TO THE SATISFACTION OF THE INVOLVED UTILITY AT THE CONTRACTOR'S EXPENSE.
- MINIMUM CONDUCTOR SIZE ON THIS SHEET SHALL BE #10 CU, 1" CONDUIT.

SITE PLAN GENERAL NOTES	2
	E-105

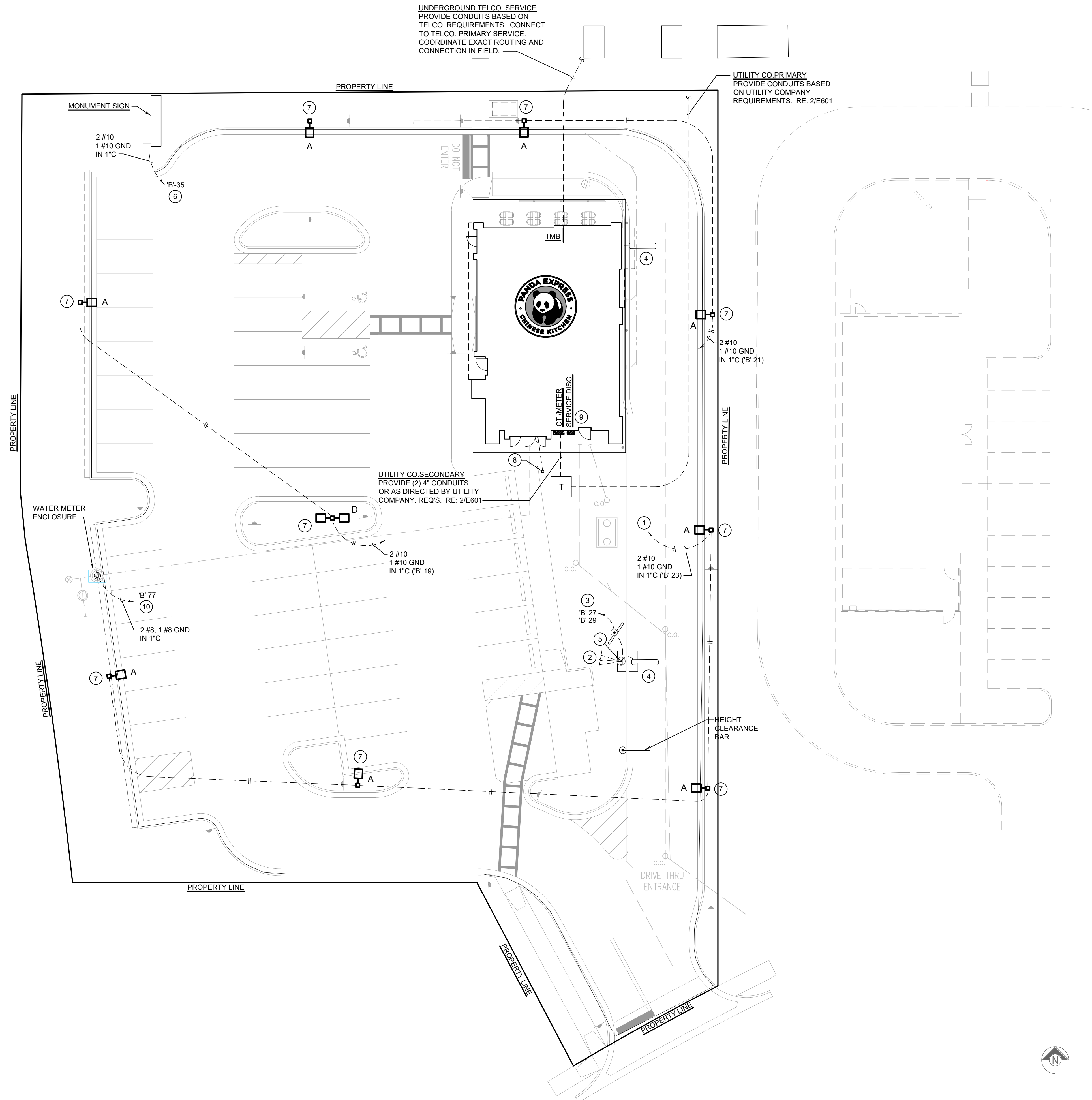
1. FEED THROUGH LIGHTING CONTACTOR. REF: DETAIL 11/E-400.
2. STUB UP LOCATION FOR (3) 3/4" CONDUITS & PULL STRINGS, TO ENTER BUILDING & UP TO 6" ABOVE CEILING. REFER TO SHEET 1/E-401.
3. STUB-UP LOCATION FOR MENU BOARD. SIGN DISCONNECT PROVIDED BY SIGN CONTRACTOR. COORDINATE PRECISE LOCATION WITH ARCHITECT / OWNER.
4. DRIVE-THRU SENSOR LOOP. COORDINATE LOCATION. REFER TO DETAIL 1/E-401.
5. STUB-UP FOR DRIVE-THRU ORDER CONFIRMATION MONITOR. COORDINATE LOCATION WITH ARCHITECT / OWNER.
6. STUB UP LOCATION FOR MONUMENT SIGN. ELECTRICAL CONTRACTOR TO PROVIDE NON-FUSED DISCONNECT AT BASE OF SIGN. COORDINATE EXACT LOCATION WITH ARCHITECT/OWNER. CONNECT TO EXTERIOR BUILDING SIGN TIMER CONTROL. REFERENCE DETAIL 11/E-400.
7. SEE POLE MOUNTING DETAIL. REFER TO DETAIL 4/E-105.
8. CABLE PULL BOX. REFER TO DETAIL 1/E-100. INSTALL MINIMUM 3' FROM SIDEWALK. DO NOT INSTALL IN SIDEWALK CONCRETE.
9. REFERENCE DETAIL 1/E-400 FOR GROUNDING DETAIL.
10. PROVIDE A 20A, 120V CIRCUIT AND CONNECTIONS TO WATER METER HEATER AND RECEPTACLE IN BELOW GRADE ENCLOSURE. ENCLOSURE, HEATER AND RECEPTACLE PROVIDED BY OTHERS.

SITE PLAN KEYED NOTES	3
	E-105



**NOTE: THIS DETAIL IS FOR ELECTRICAL INSTALLATION ONLY. REFER TO STRUCTURAL DRAWINGS FOR MORE INFORMATION.**

POLE MOUNTING DETAILS	4
NO SCALE	E-105



SITE & EXTERIOR LIGHTING PLAN	1
1" = 16'-0"	E-105



**PANDA EXPRESS, INC.**  
1683 Walnut Grove Ave.  
Rosemead, California  
91770  
Telephone: 626.799.9898  
Facsimile: 626.372.8288

All ideas, designs, arrangement and plans indicated or represented by this drawing are the property of Panda Express Inc. and were created for use on this specific project. None of these ideas, designs, arrangements or plans may be used by or disclosed to any person, firm, or corporation without the written permission of Panda Express Inc.

## REVISIONS:

[illegible]

ISSUE DATE:

	STATE PERMIT	06.07.21

DRAWN BY: G. COLLINS

PANDA PROJECT #: D8060  
ARCH PROJECT #: JCDD20-0240



**NORR**  
ARCHITECTS ENGINEERS PLANNERS

**PANDA EXPRESS**  
TRUE WARM & WELCOME  
390 W Spring Mill Pointe Dr.  
Westfield, IN 46074

E-105

SITE &amp; EXTERIOR LIGHTING PLAN

TRUE WARM & WELCOME 2300 R5