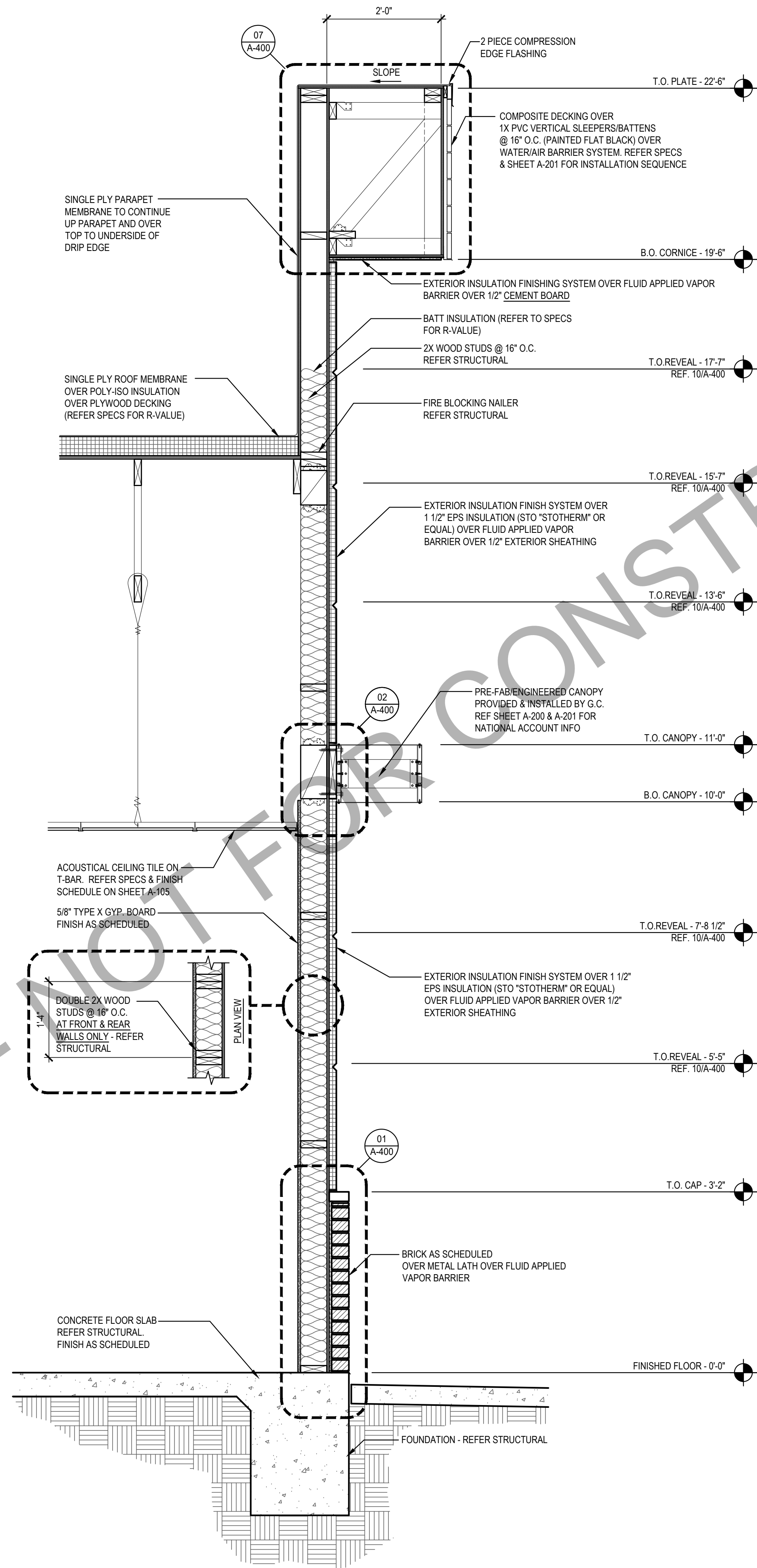
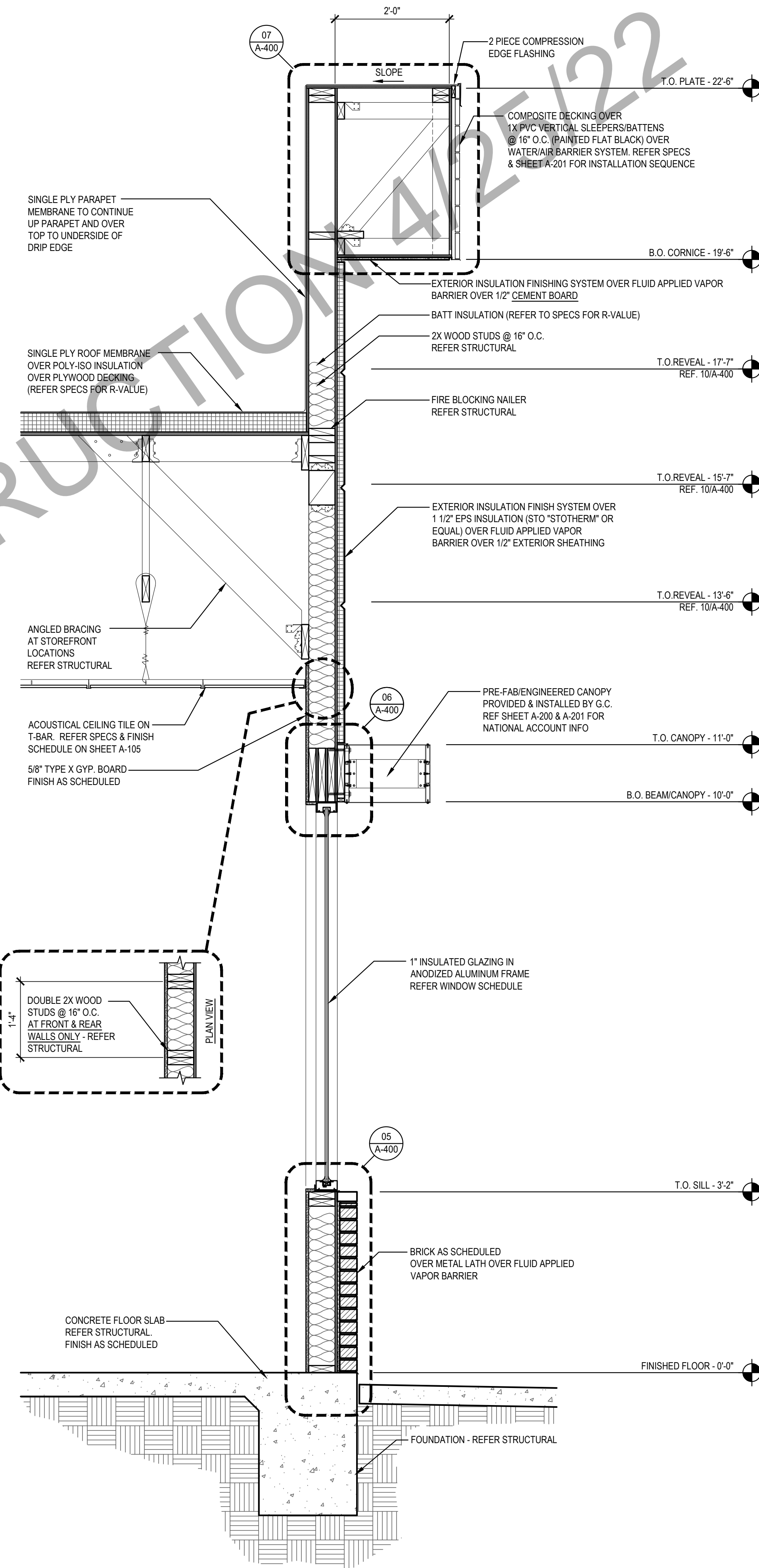


SECTION 1  
Scale= 3/4" = 1'-0" A-301



SECTION 2  
Scale= 3/4" = 1'-0" A-301



SECTION 3  
Scale= 3/4" = 1'-0" A-301



PANDA RESTAURANT GROUP INC.  
1683 Walnut Grove Ave.  
Rosemead, California  
91770  
Telephone: 626.799.9898  
Facsimile: 626.372.8288

All ideas, designs, arrangement and plans indicated or represented by this drawing are the property of Panda Express Inc. and were created for use on this specific project. None of these ideas, designs, arrangements or plans may be used by or disclosed to any person, firm, or corporation without the written permission of Panda Express Inc.

REVISIONS:

|  |  |
|--|--|
|  |  |
|  |  |
|  |  |
|  |  |
|  |  |
|  |  |
|  |  |
|  |  |
|  |  |
|  |  |

ISSUE DATE:

|   |                             |
|---|-----------------------------|
| 1 | 03.04.2022 ISSUE FOR PERMIT |
|   |                             |
|   |                             |
|   |                             |
|   |                             |
|   |                             |
|   |                             |
|   |                             |
|   |                             |
|   |                             |

DRAWN BY: JDV

PANDA PROJECT #: S8-22-D8698  
C&P PROJECT #: 2210806

**CUHACI PETERSON**  
2600 Maitland Center Parkway  
Suite #200  
Maitland, FL 32751  
P (407) 661-9100  
F (407) 661-9101  
c-p.com

03.04.2022



**PANDA EXPRESS**  
TRUE WARM AND WELCOME 2200  
3030 DERITA ROAD  
CONCORD, NC 28027

**A-301**

WALL SECTIONS

TRUE WARM & WELCOME 2200 R4